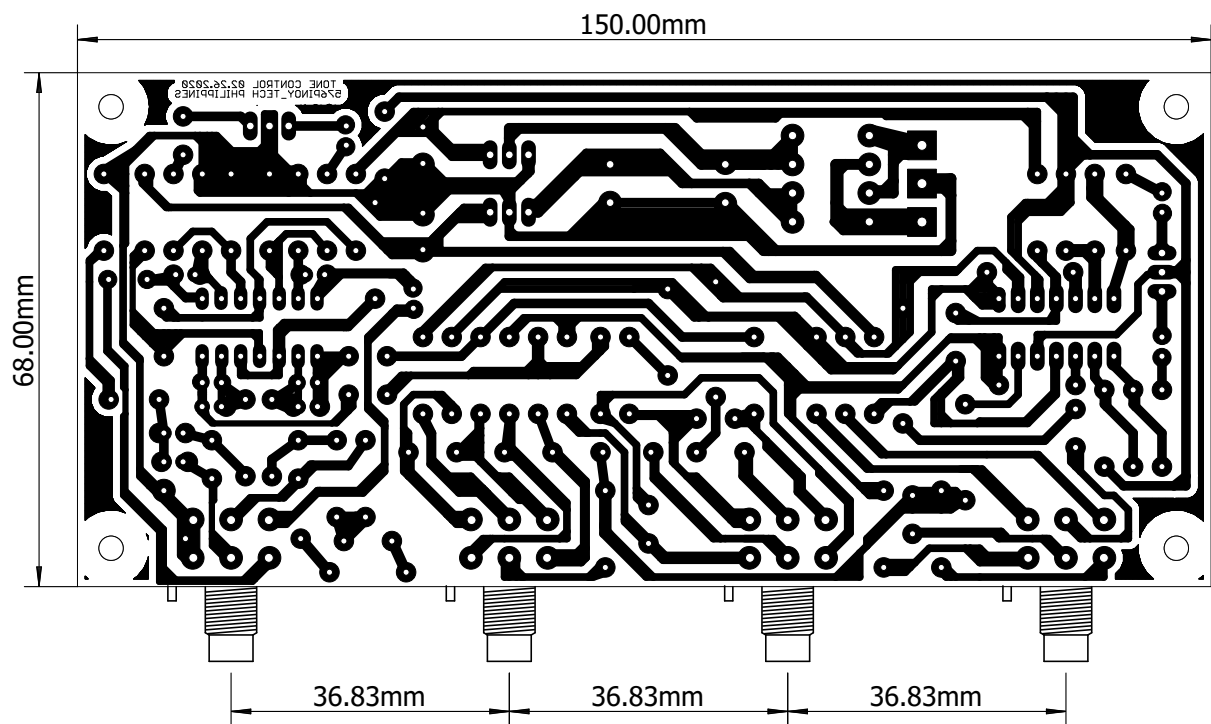
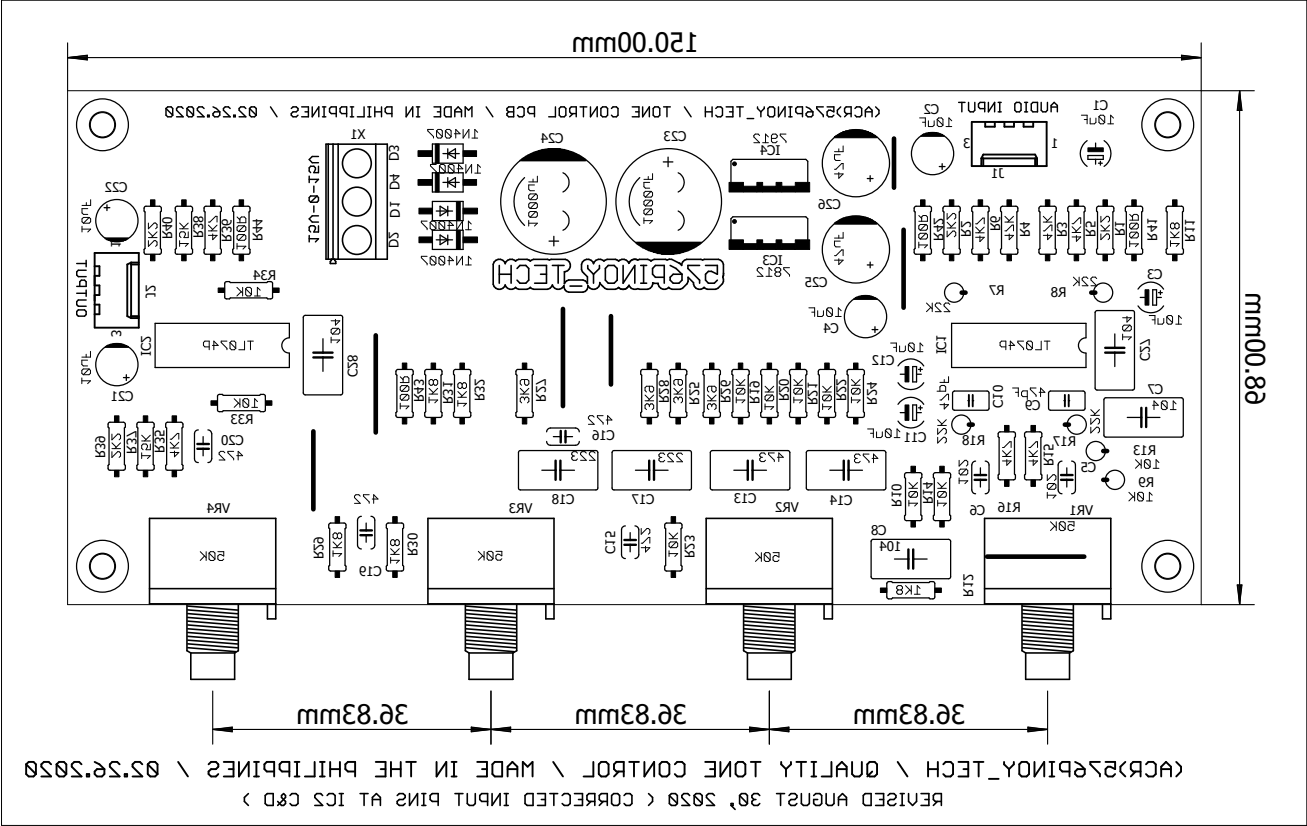
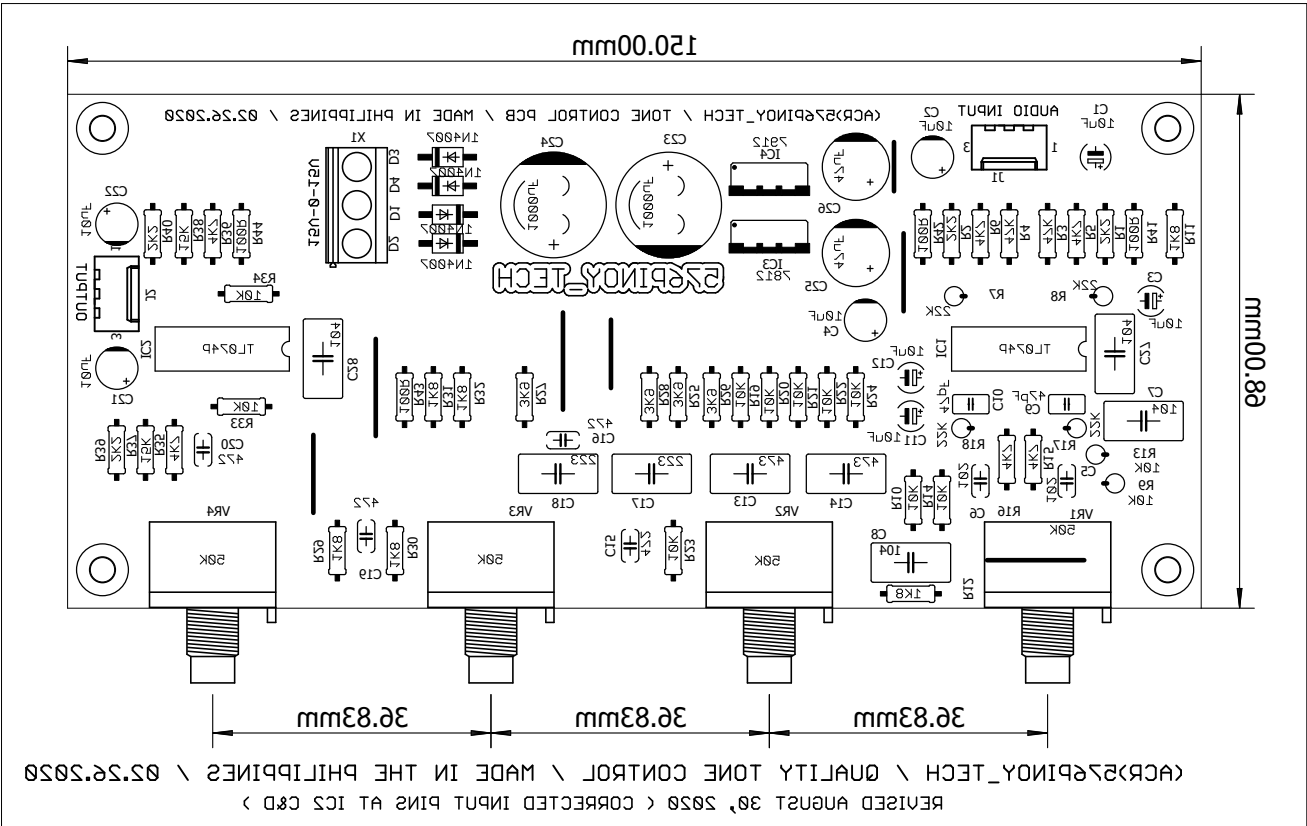


<ACR>576PIN0Y_TECH / QUALITY TONE CONTROL / MADE IN THE PHILIPPINES / 02.26.2020
 REVISED AUGUST 30, 2020 < CORRECTED INPUT PINS AT IC2 C&D >

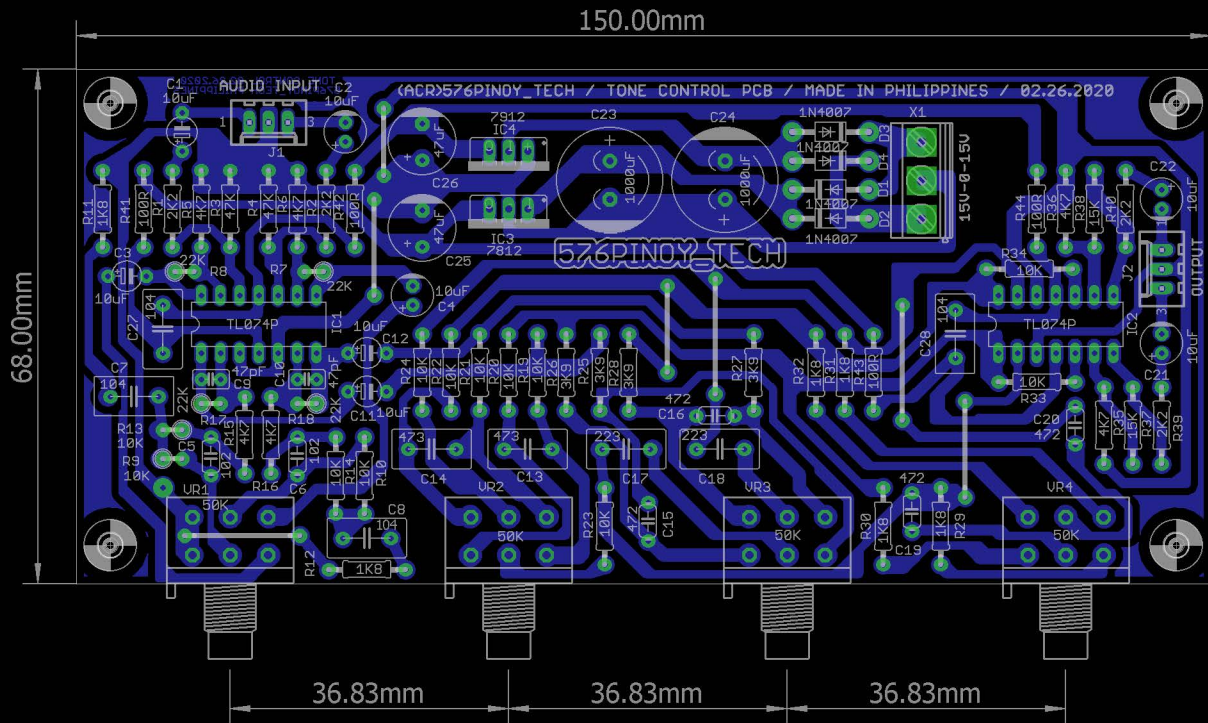


<ACR>576PIN0Y_TECH / QUALITY TONE CONTROL / MADE IN THE PHILIPPINES / 02.26.2020
 REVISED AUGUST 30, 2020 < CORRECTED INPUT PINS AT IC2 C&D >



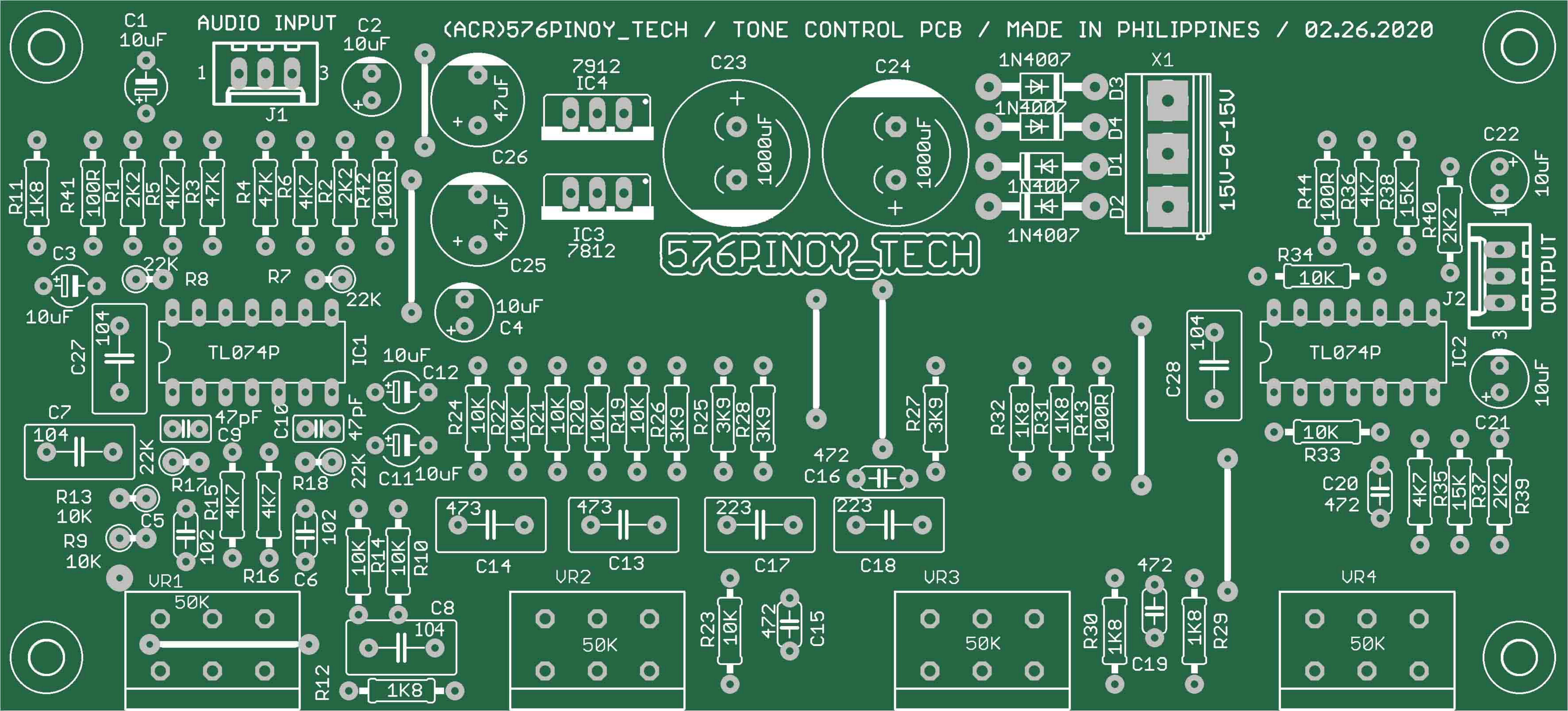
(ACR)576PINOY_TECH / QUALITY TONE CONTROL / MADE IN THE PHILIPPINES / 02.26.2020

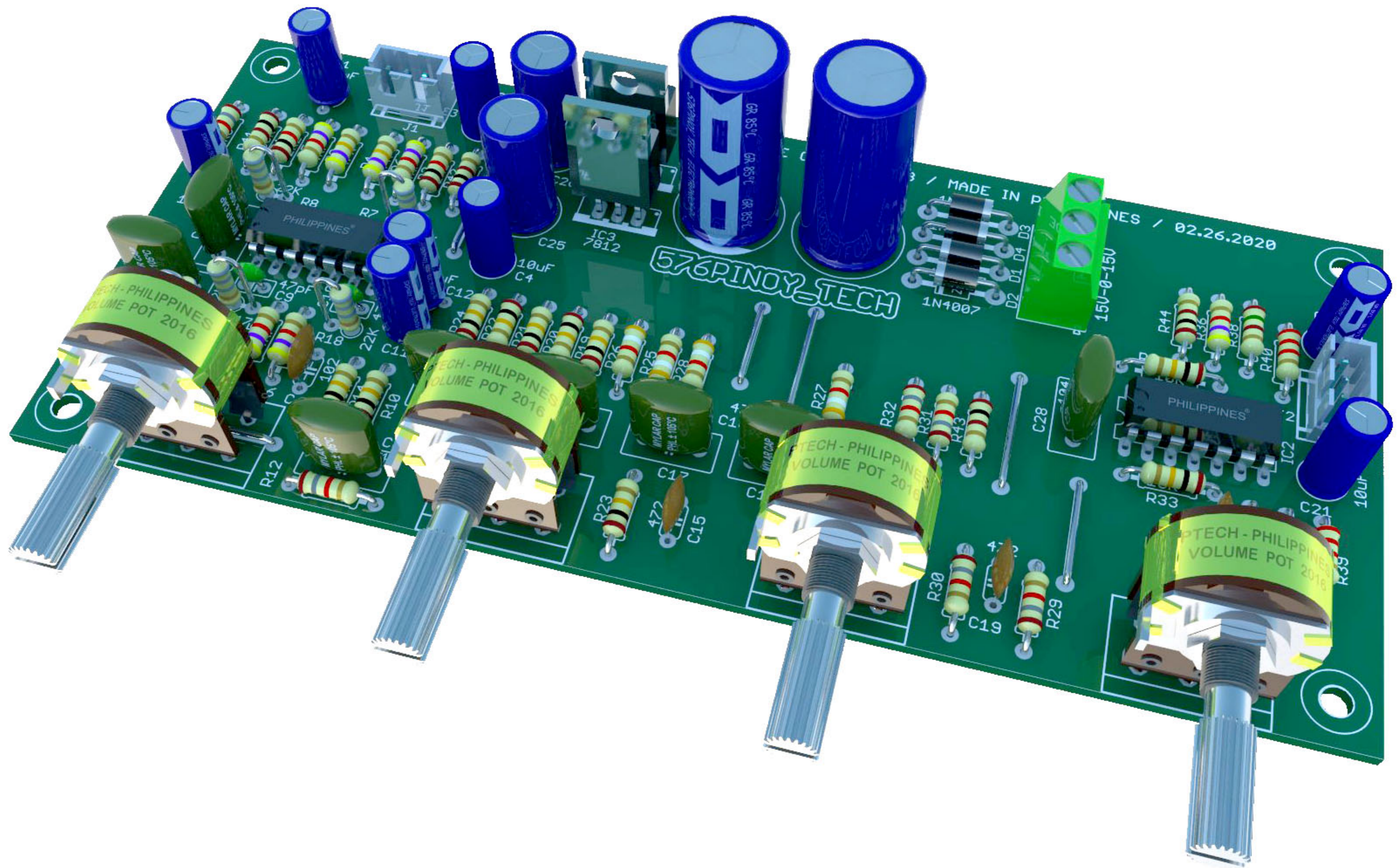
Qty	Value	Description	Parts	Remarks
2	102/50V	Mylar Cap	C5, C6	0.001uF
4	104/50V	Mylar Cap	C7, C8, C27, C28	0.1uF
2	223/50V	Mylar Cap	C17, C18	0.022uF
4	472/5V	Mylar Cap	C15, C16, C19, C20	0.0047uF
2	473/50V	Mylar Cap	C13, C14	0.047uF
2	47pF/50V	Ceramic Cap	C9, C10	
2	1000uF/25V	Electrolytic Cap	C23, C24	
8	10uF/16V	Electrolytic Cap	C1, C2, C3, C4, C11, C12, C21, C22	
2	47uF/16V	Electrolytic Cap	C25, C26	
4	1N4007	Gen Purpose Diode, 1 A	D1, D2, D3, D4	
2	TL074P	DIP OP AMP IC	IC1, IC2	LM324 can use
1	7812	Vreg TO-220	IC3	
1	7912	Vreg TO-220	IC4	
4	100R	Resistor 1/4W	R41, R42, R43, R44	
6	1K8	Resistor 1/4W	R11, R12, R29, R30, R31, R32	
4	2K2	Resistor 1/4W	R1, R2, R39, R40	
4	3K9	Resistor 1/4W	R25, R26, R27, R28	
6	4K7	Resistor 1/4W	R5, R6, R15, R16, R35, R36	
12	10K	Resistor 1/4W	R9, R10, R13, R14, R19, R20, R21, R22, R23, R24, R33, R34	
2	15K	Resistor 1/4W	R37, R38	
6	47K	Resistor 1/4W	R3, R4, R7, R8, R17, R18	can reduce to 22k if gain is too high
4	50K	Mini Size Dual Pot	VR1, VR2, VR3, VR4	
2	22-27-2031-03	JST Connector	J1, J2	
1	MKDSN1,5/3-5,08	MKDSN 1,5/ 3-5,08 Printklemme	X1	




(ACR)576PINOY_TECH / QUALITY TONE CONTROL / MADE IN THE PHILIPPINES / 02.26.2020

REVISED AUGUST 30, 2020 (CORRECTED INPUT PINS AT IC2 C&D)









1N4007

576PINOY-TECH

IC3
7812

C25

10uF
C4

10 μ F

C

1.1 10uF

2

C14

UR2

C13

C17

C18

UR3

C8

CT4

NBS

TECH-PHILIPPINES
VOLUME POT 2016

TECH - PHILIPPINES
VOLUME POT 2016

PTECH - PHILIPPINES
VOLUME POT 2016