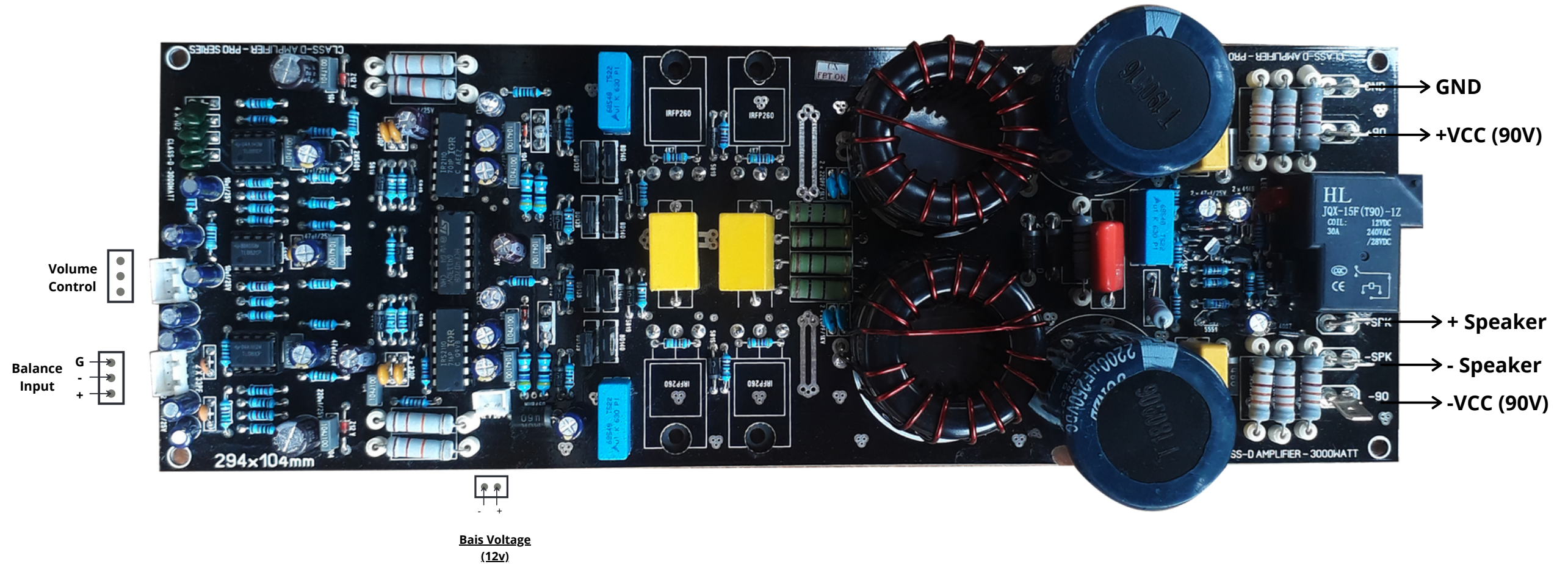


FULL BRIDGE CLASS D AMPLIFIER (3KW)

Connection:



- Operation Voltage:- $\pm 90V$ Dual Supply
- Full Bridge Amp With Speaker Protection
- Balance Input
- Bais Voltage:- 12V
- Size:- 104mmX294mm

SD-AUDIO

**All Type Of Driver Board
Available**

(Class D, Class TD, Class AB, Class H)

Contact: +91 8055407755