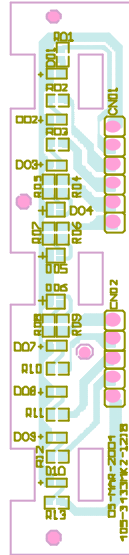
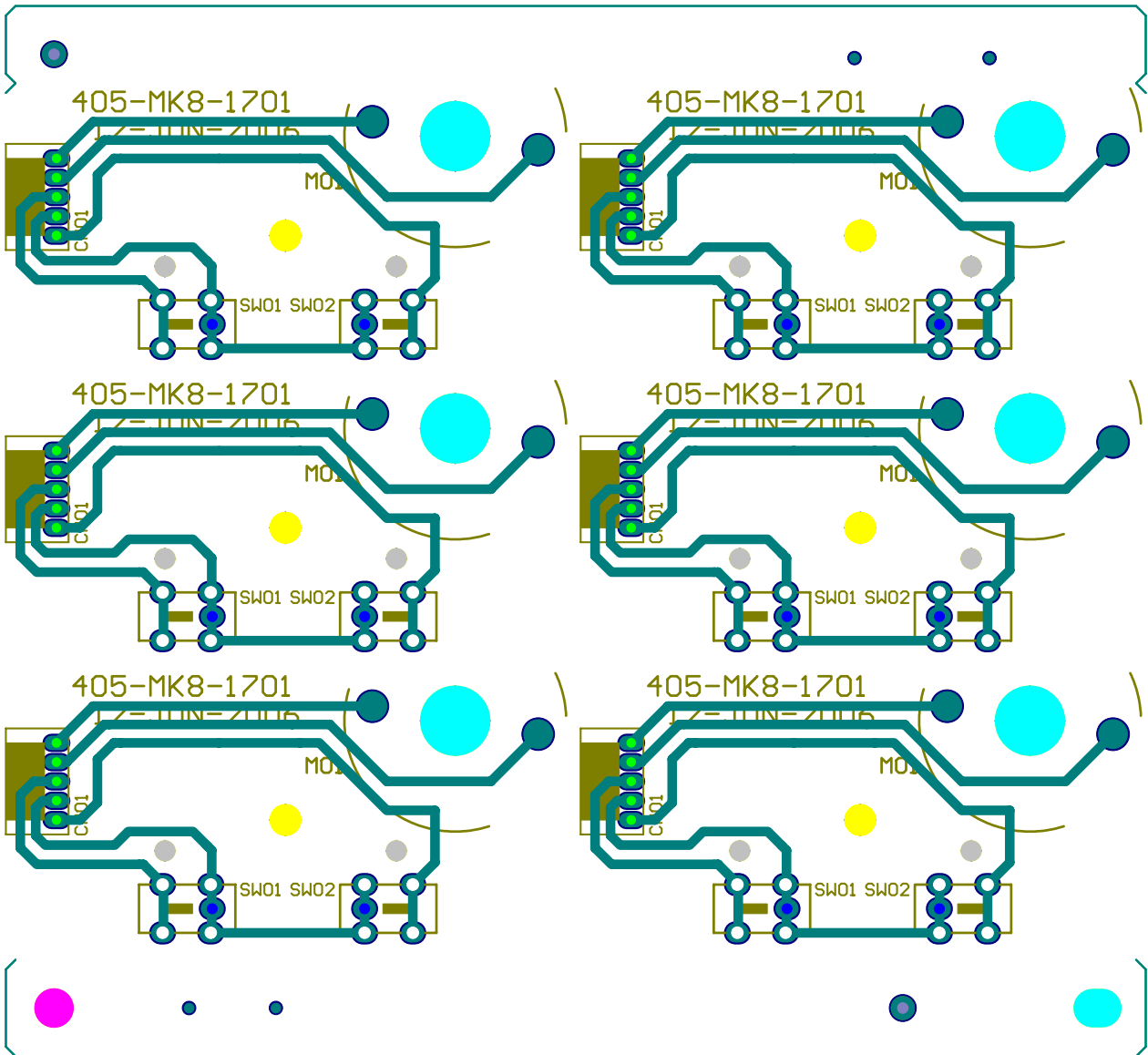


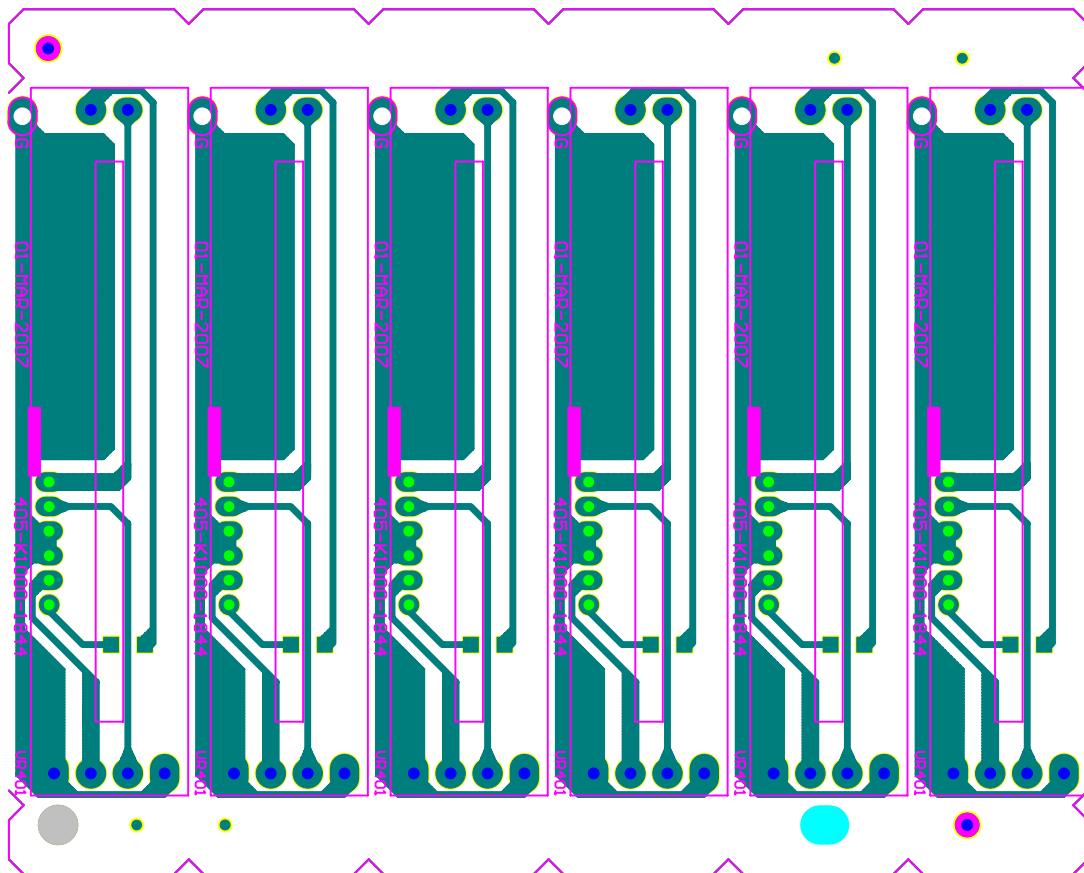
405-3433MK2-1218□
LED PCB



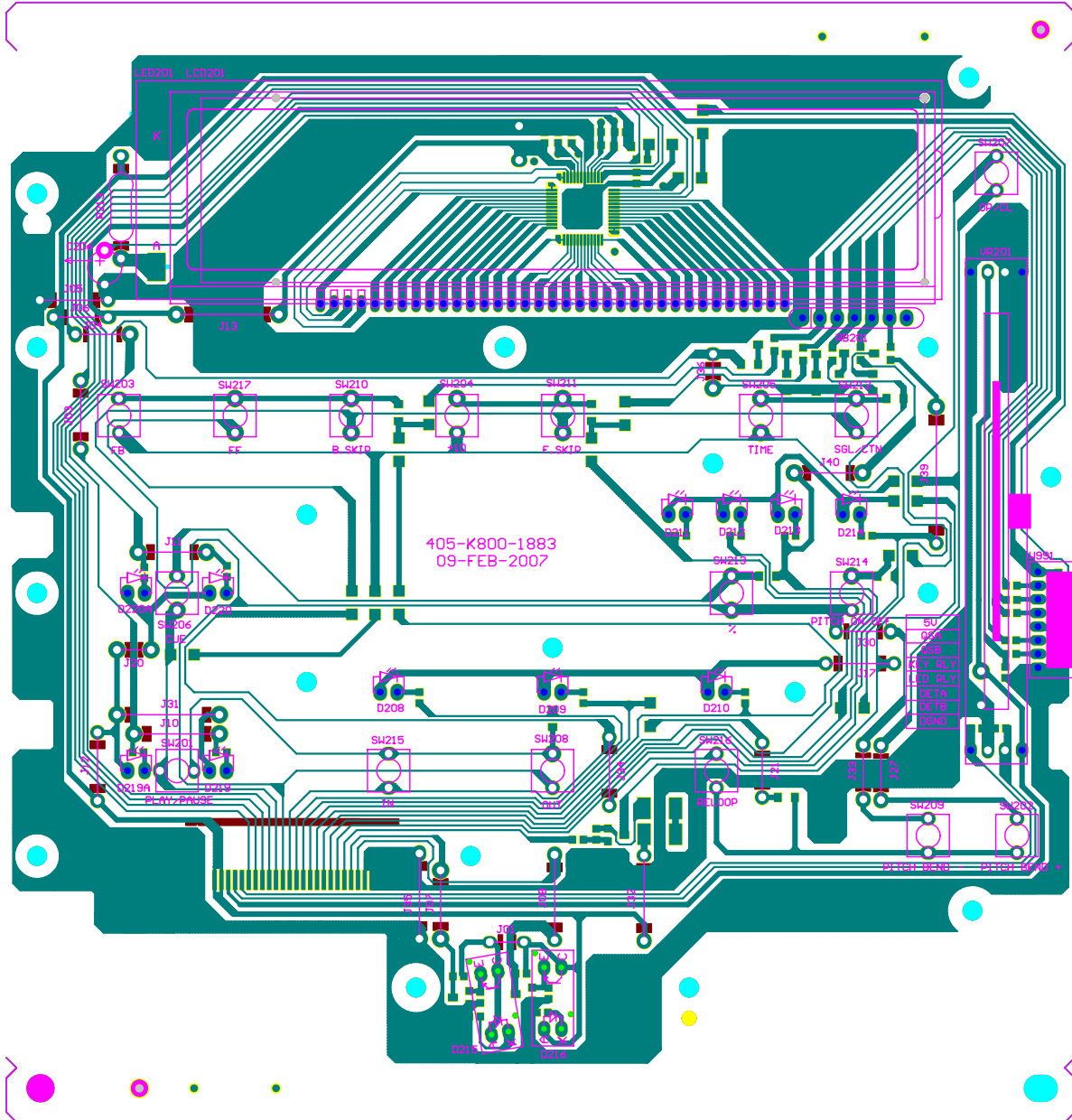
405-MK8-1701
MOTOR & SW PCB



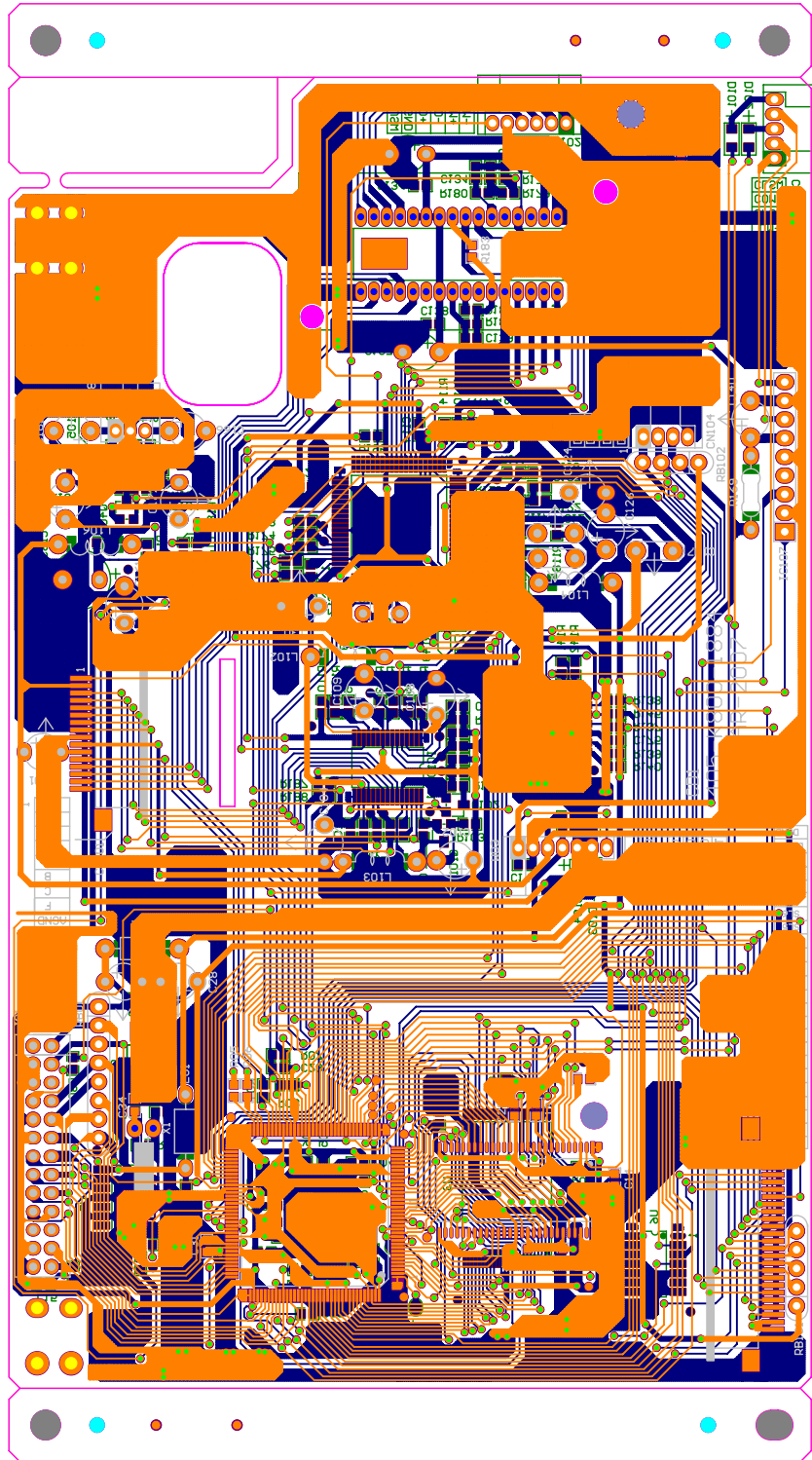
405-K1000-1844
CROSS FADER PCB



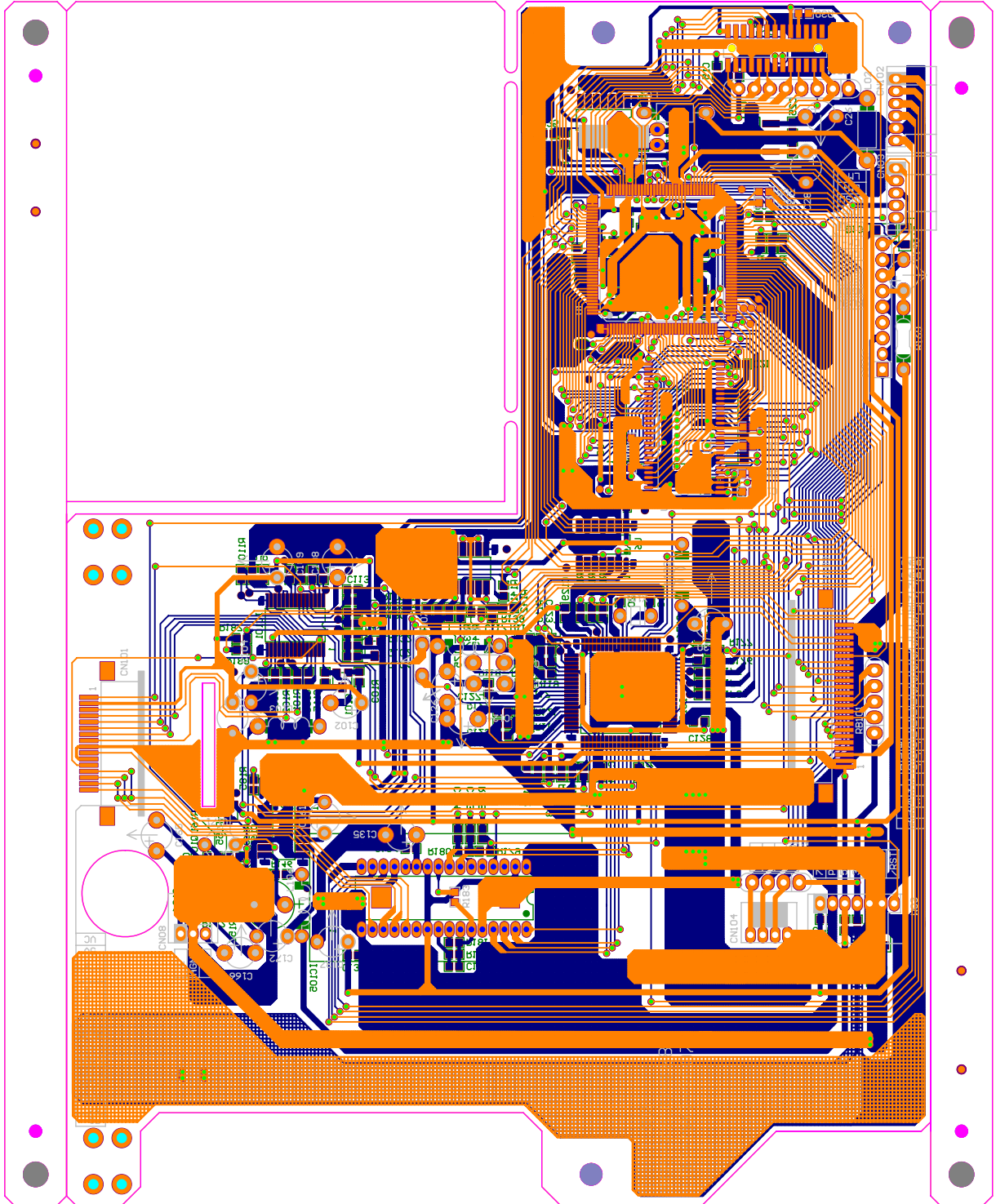
405-K800-1883
CONTROL PCB



405-K800-1884
SERVO/BUFFER PCB



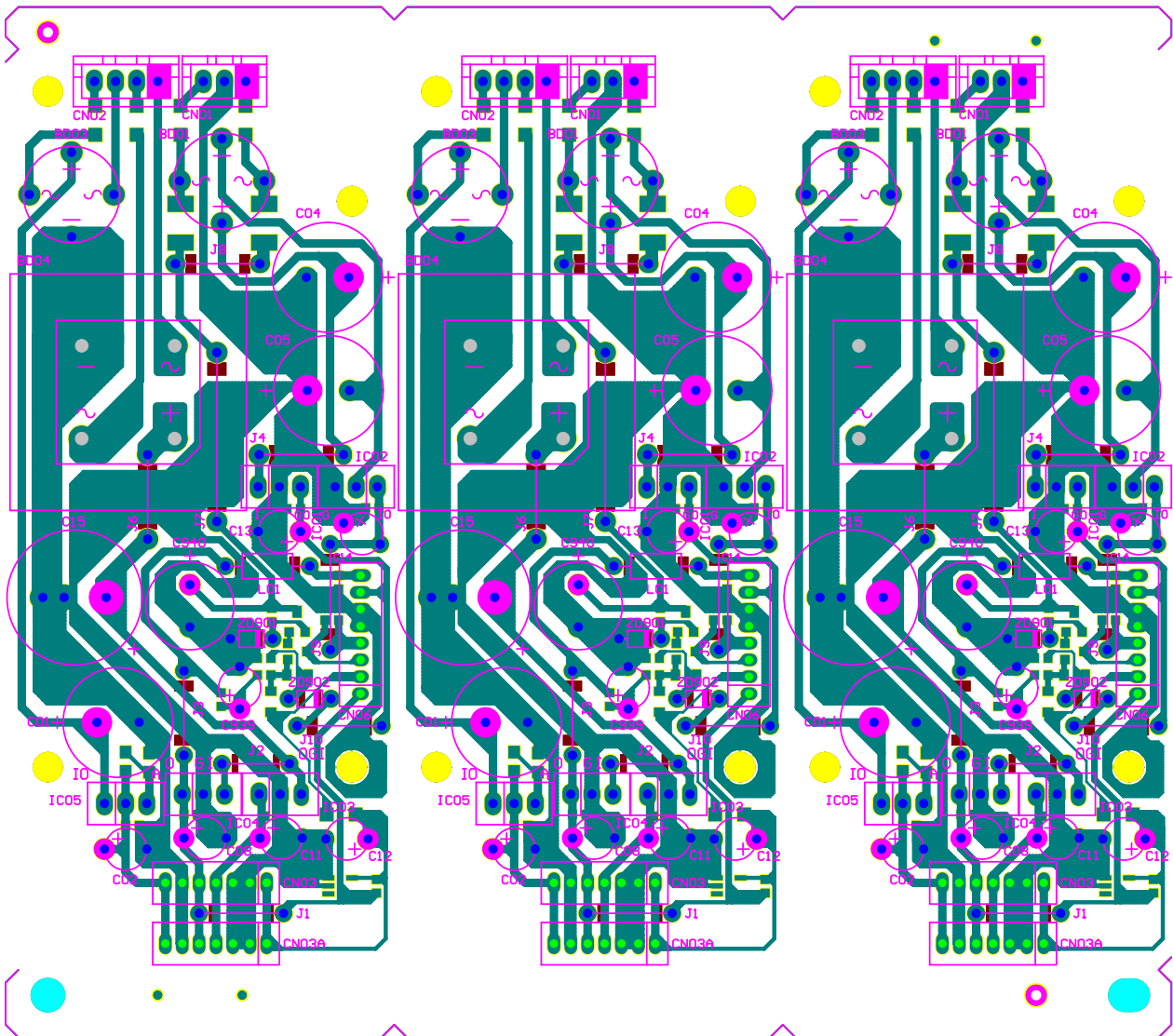
405-K800-1885
SERVO/BUFFER PCB



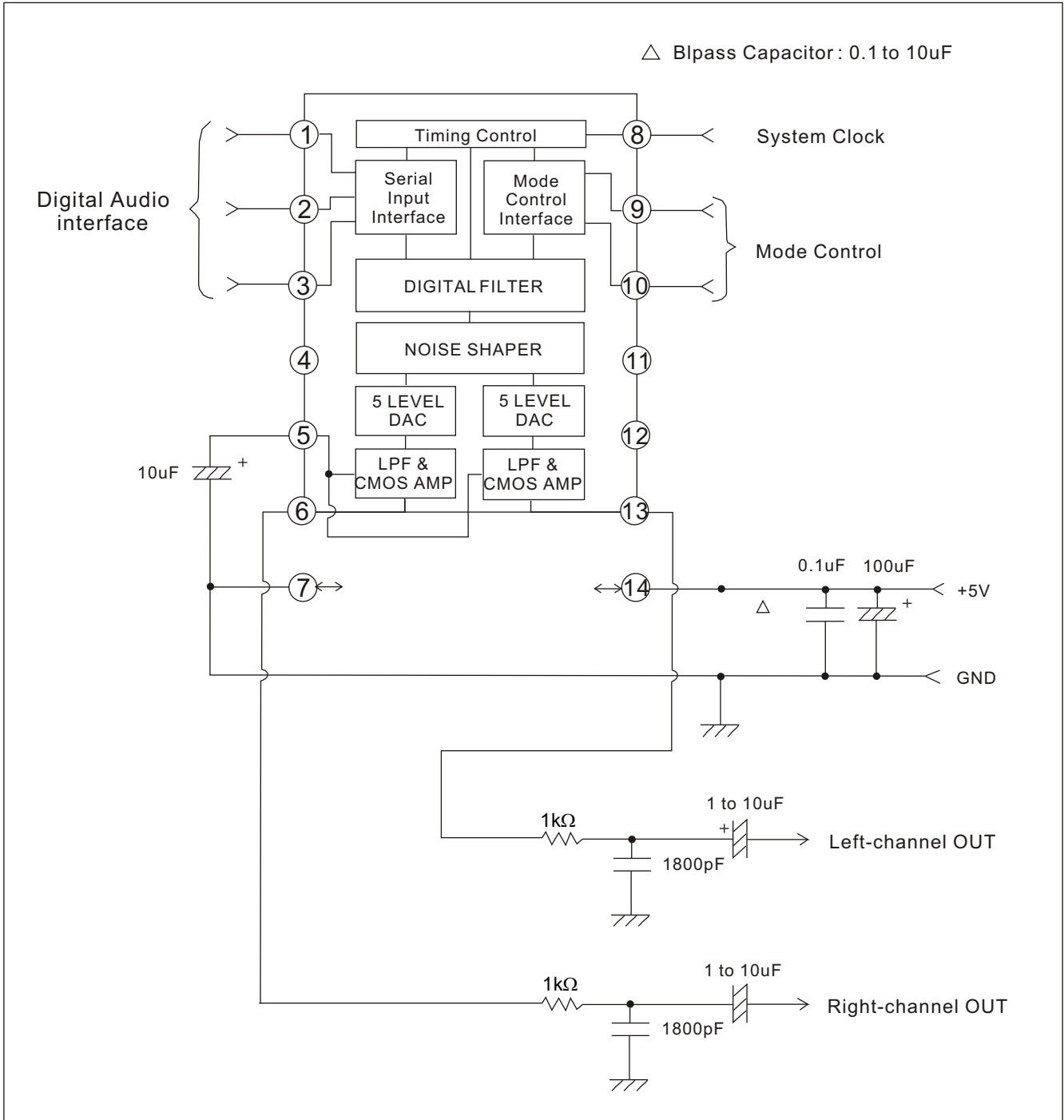
405-K1000-1887
IC PCB



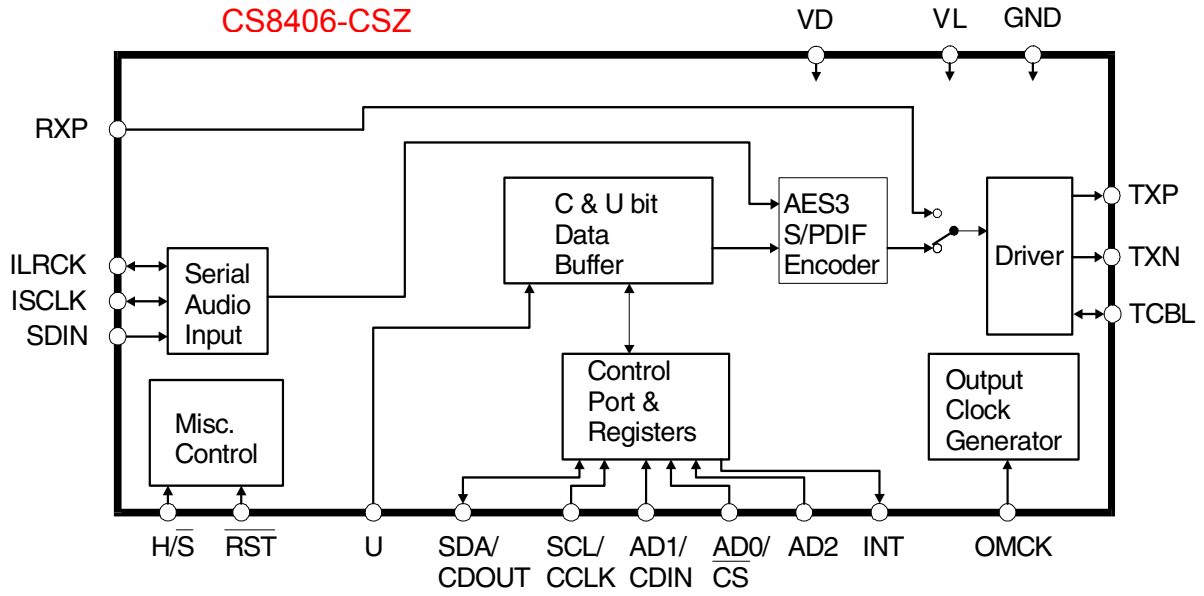
405-K1000-1940
POWER PCB



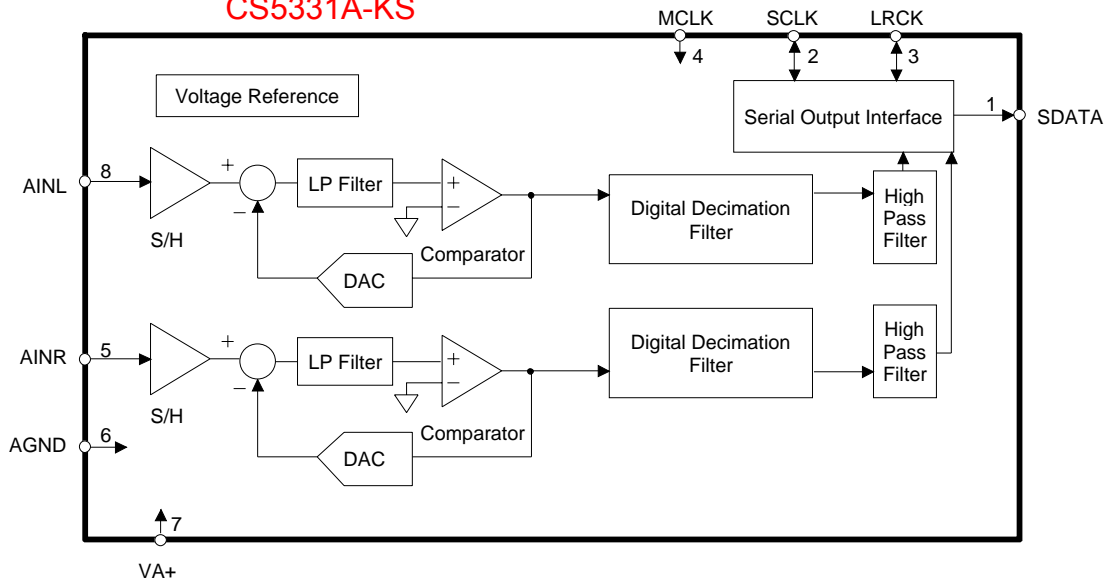
417-HDJ201-237
DAC PCM1725



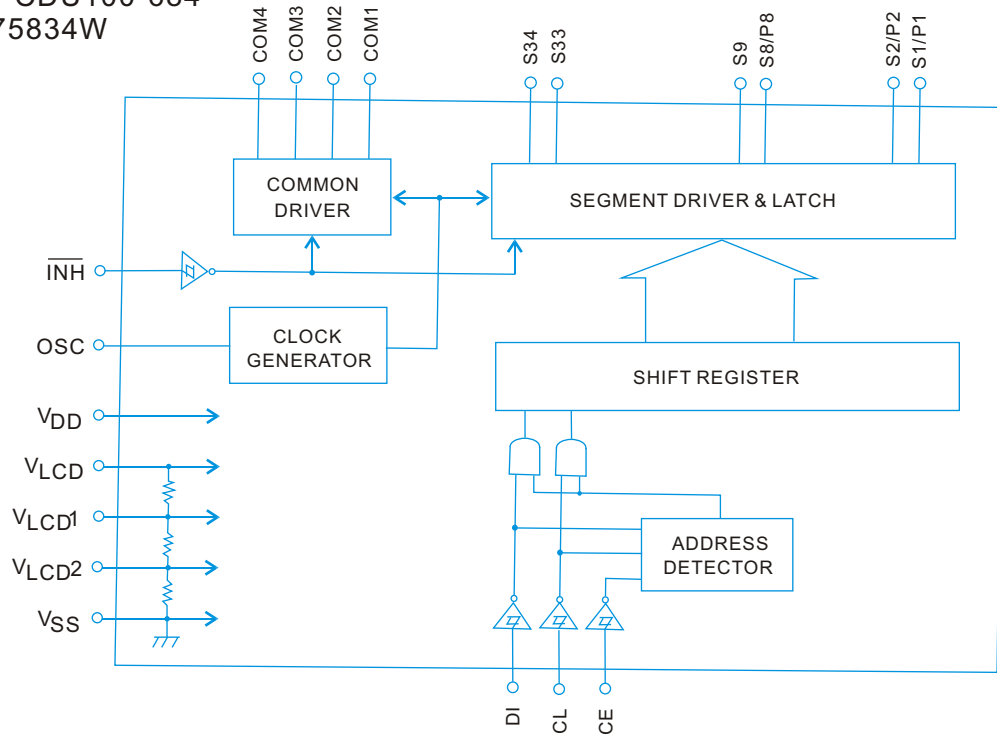
417-MH2-787
CS8406-CSZ



417-HDJ1000-508
CS5331A-KS



417-CDU100-684
LC75834W



417-205-762 (LM339)

LM339, LM239, LM2901, LM2901V, NCV2901, MC3302

Single Supply Quad Comparators

These comparators are designed for use in level detection, low-level sensing and memory applications in consumer, automotive, and industrial electronic applications.

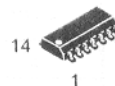
Features

- Single or Split Supply Operation
- Low Input Bias Current: 25 nA (Typ)
- Low Input Offset Current: ± 5.0 nA (Typ)
- Low Input Offset Voltage
- Input Common Mode Voltage Range to GND
- Low Output Saturation Voltage: 130 mV (Typ) @ 4.0 mA
- TTL and CMOS Compatible
- ESD Clamps on the Inputs Increase Reliability without Affecting Device Operation
- Pb-Free Packages are Available*

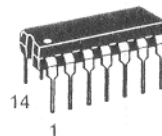


ON Semiconductor®

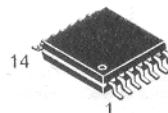
<http://onsemi.com>



SOIC-14
D SUFFIX
CASE 751A

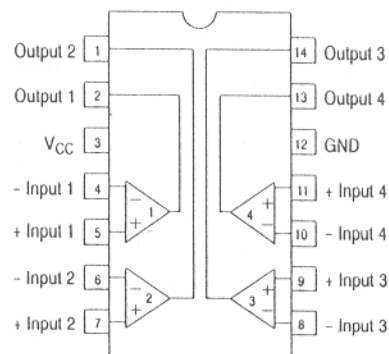


PDIP-14
N, P SUFFIX
CASE 646



TSSOP-14
DTB SUFFIX
CASE 948G

PIN CONNECTIONS



(Top View)

ORDERING INFORMATION

See detailed ordering and shipping information in the package dimensions section on page 6 of this data sheet.

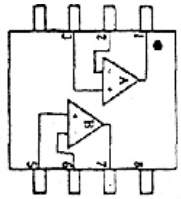
DEVICE MARKING INFORMATION

See general marking information in the device marking section on page 8 of this data sheet.

*For additional information on our Pb-Free strategy and soldering details, please download the ON Semiconductor Soldering and Mounting Techniques Reference Manual, SOLDERRM/D.

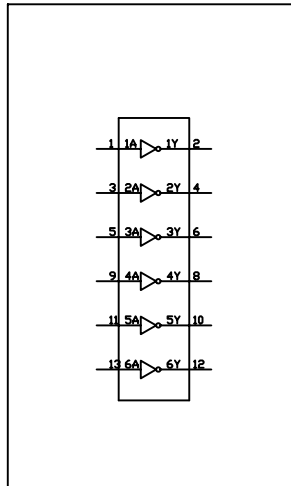
417-3113-018
 NJM4556A

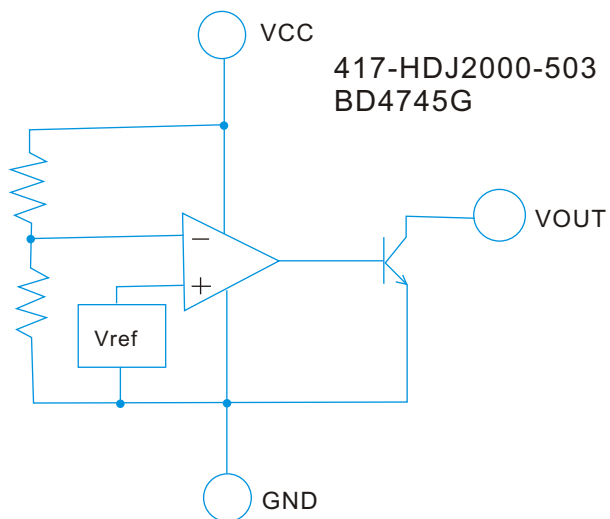
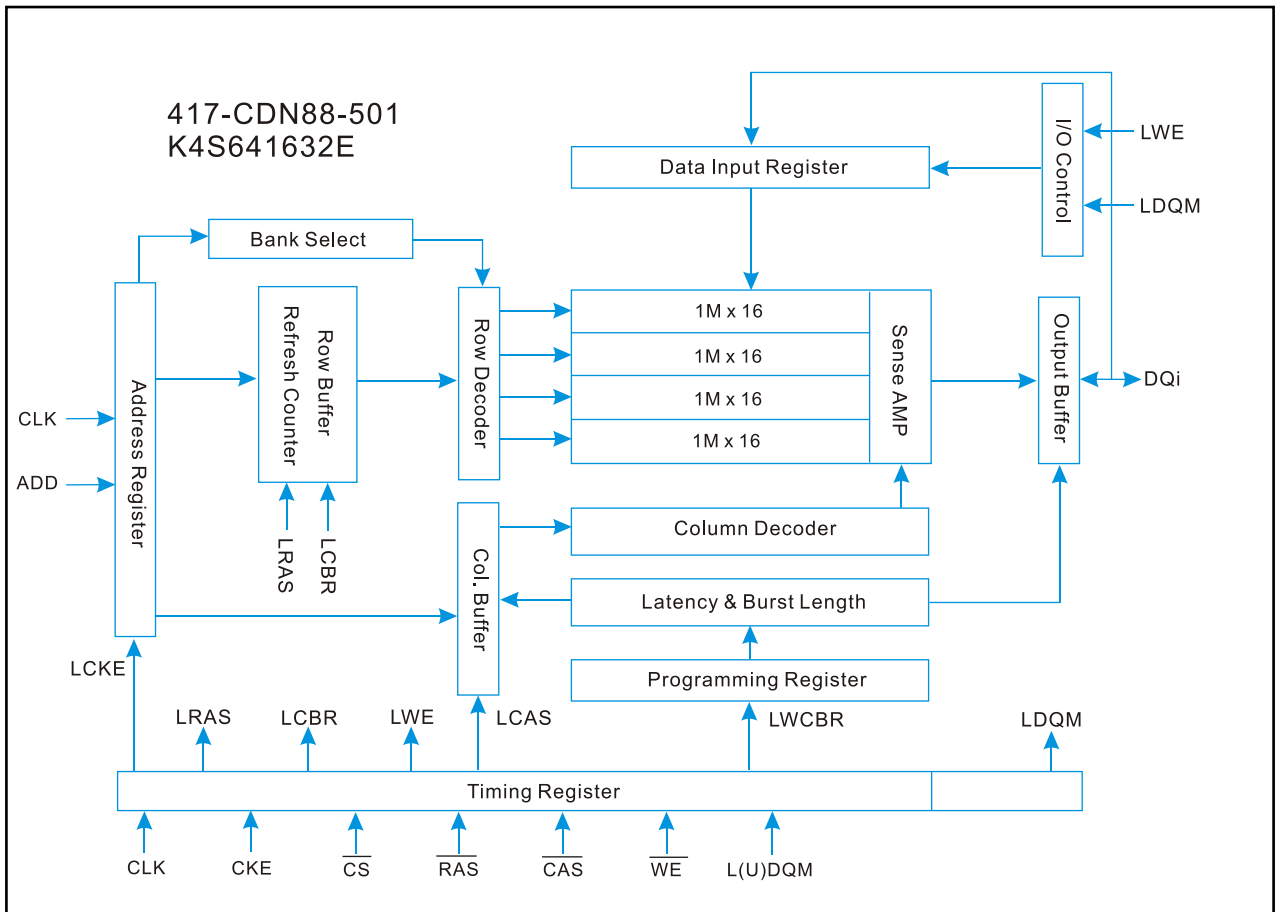
D.M.V-Type
 (Top View)



- PIN FUNCTION**
- 1. A OUTPUT
 - 2. A-INPUB
 - 3. A+INPUT
 - 4. V-
 - 5. B+INPUT
 - 6. B-INPUB
 - 7. B OUTPUT
 - 8. V

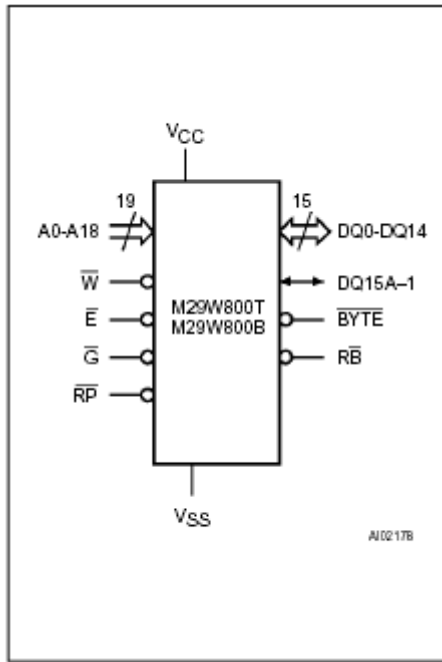
417-DCM370E3-378
 74HC04



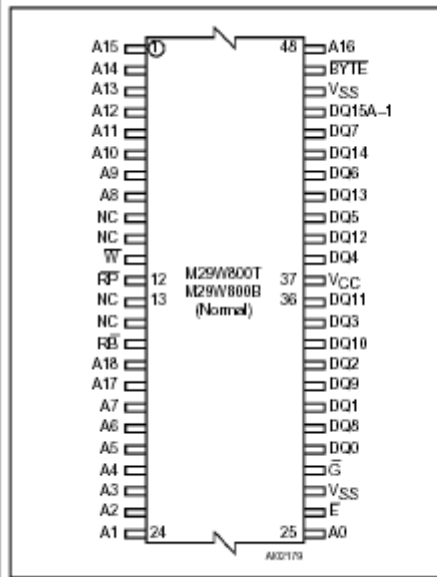


417-MCDS4-735

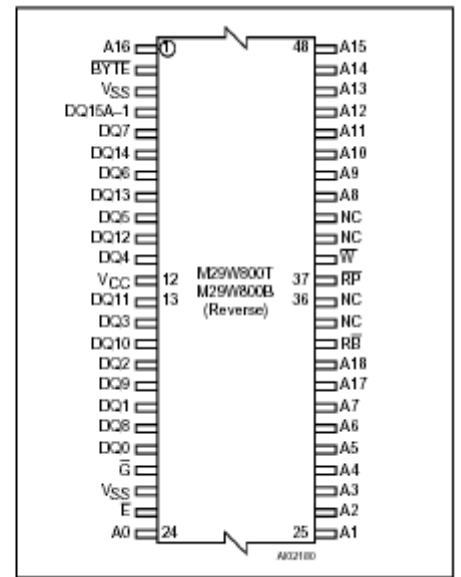
IC(M29W800B70N6.SMD)



TSOP Pin Connections



TSOP Reverse Pin Connections



Warning: NC - Not Connected.

Warning: NC - Not Connected.

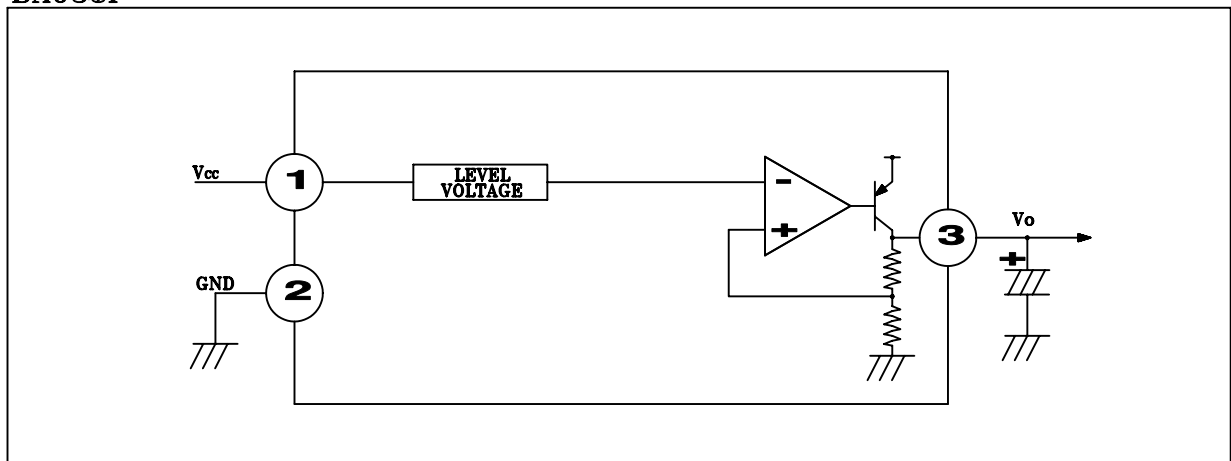
Table 1. Signal Names

A0-A18	Address Inputs
DQ0-DQ7	Data Input/Outputs, Command Inputs
DQ8-DQ14	Data Input/Outputs
DQ15A-1	Data Input/Output or Address Input
\bar{E}	Chip Enable
\bar{G}	Output Enable
\bar{W}	Write Enable
\bar{RP}	Reset / Block Temporary Unprotect
\bar{RB}	Ready/Busy Output
\bar{BYTE}	Byte/Word Organisation
Vcc	Supply Voltage
Vss	Ground



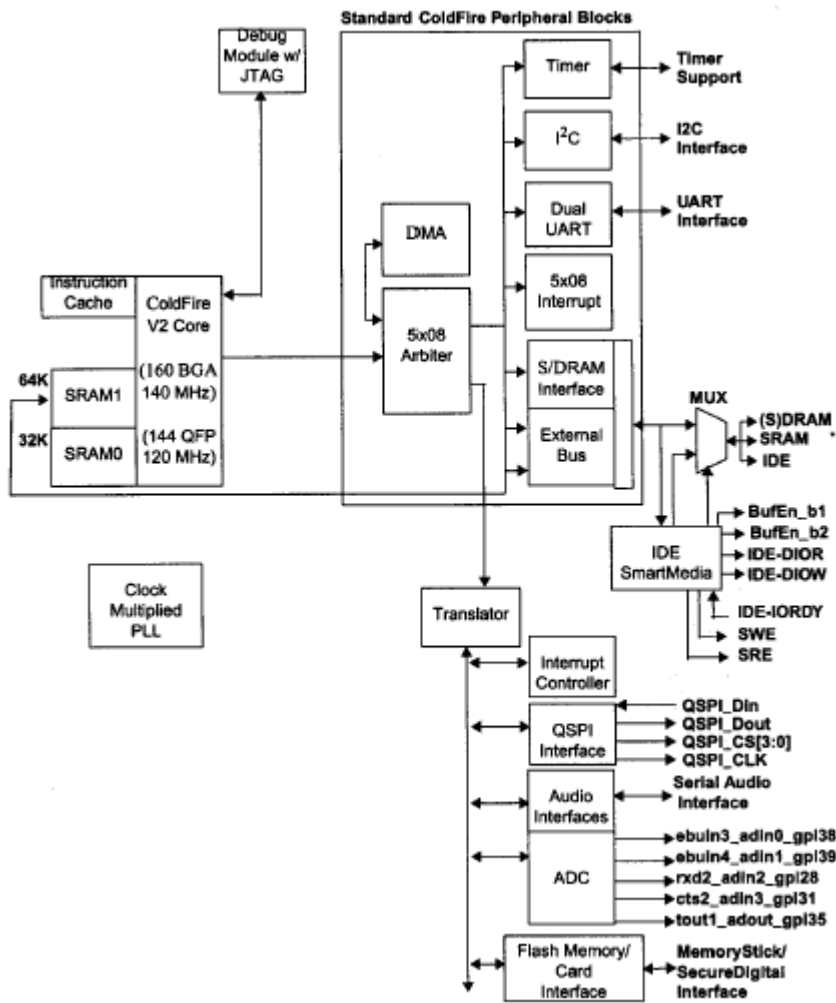
TSOP48 (N)
12 x 20 mm

417 - HV3500K - 253
BA033T



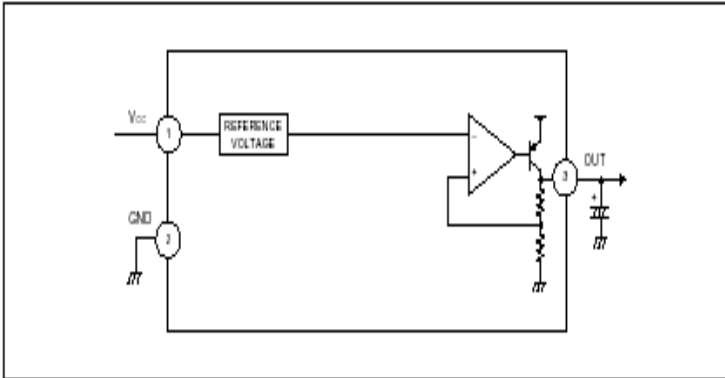
417-MCDS4-736

IC(SCF5249LPV120.SMD)

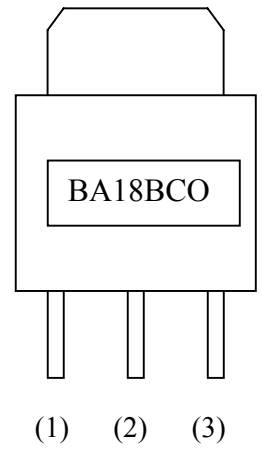


417-MCDS4-737 IC(BA18BCOFP-E2,SMD)

●Block diagram



- (1) Vcc
- (2) GND
- (3) OUT



Regulator ICs

Low saturation voltage type 3-pin regulator

BAOOT / BAOOFP series

The BAOOT and BAOOFP series are fixed positive output low drop-out type, 3-pin voltage regulators with positive output. These regulators are used to provide a stabilized output voltage from a fluctuating DC input voltage. There are 10 fixed output voltages, as follows: 3V, 3.3V, 5V, 6V*, 7V, 8V, 9V, 10V, 12V and 15V. The maximum current capacity is 1A for each of the above voltages. (Items marked with an asterisk are under development.)

●Application

Constant voltage power supply

●Features

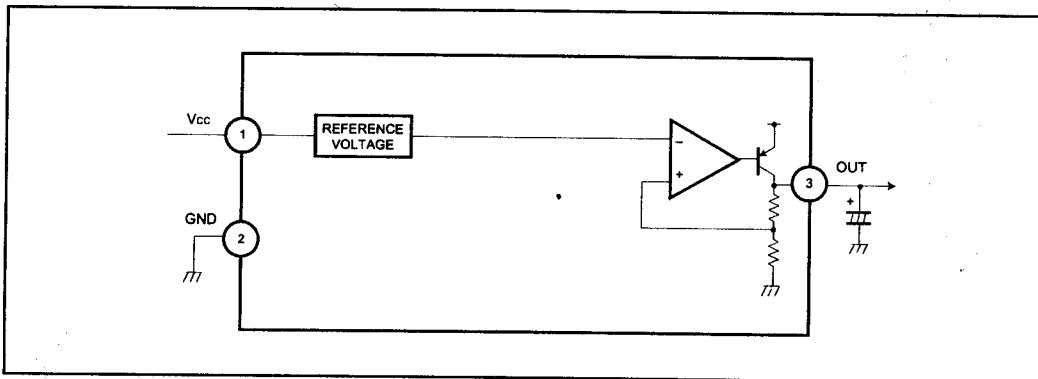
- 1) Built-in overvoltage protection circuit, overcurrent protection circuit and thermal shutdown circuit.
- 2) TO220FP and TO252-3 packages are available to cover a wide range of applications.
- 3) Compatible with the BA17800 series.
- 4) Richly diverse lineup.
- 5) Low minimum I / O voltage differential.

●Product codes

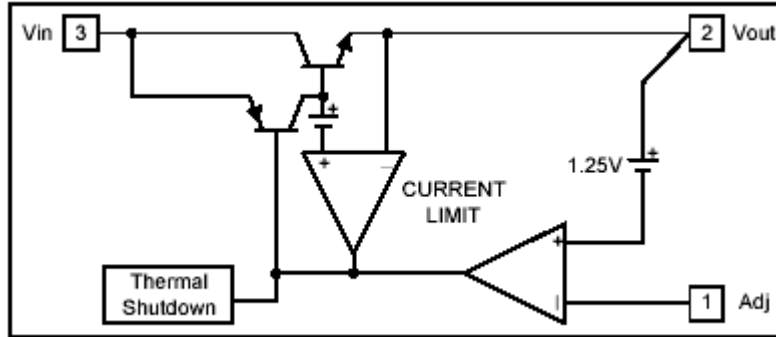
Output voltage (V)	Product No.	Output voltage (V)	Product No.
3.0	BA03T / FP	8.0	BA08T / FP
3.3	BA033T / FP	9.0	BA09T / FP
✘ 5.0	BA05T / FP	10.0	BA10T / FP
6.0	BA06T * / FP *	12.0	BA12T / FP
7.0	BA07T / FP	15.0	BA15T / FP

* : Under development.

●Block diagram

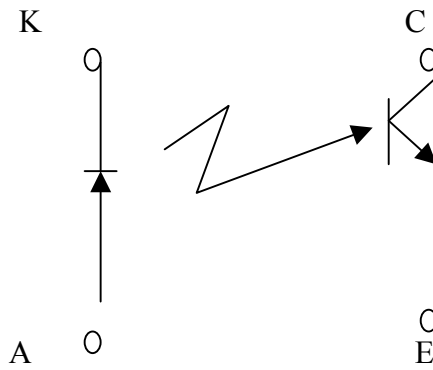


417-P22-734
AP1084-TL



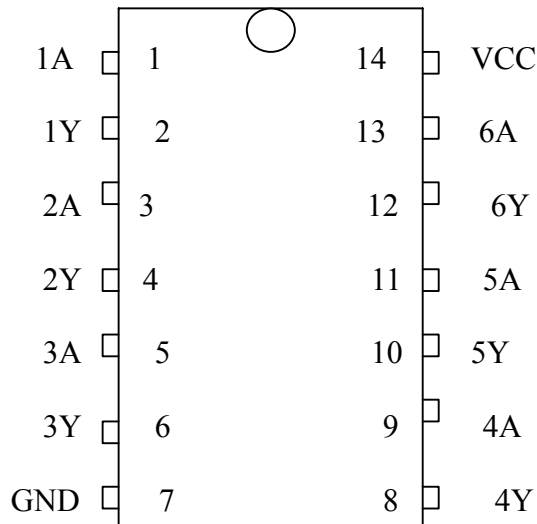
417-HDJ2000-411

SENSOR(LTH-301-07U)

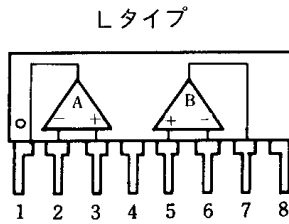
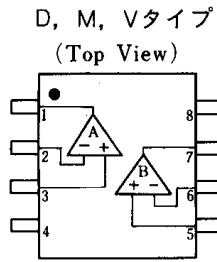


417-CDN34-274

74HC14



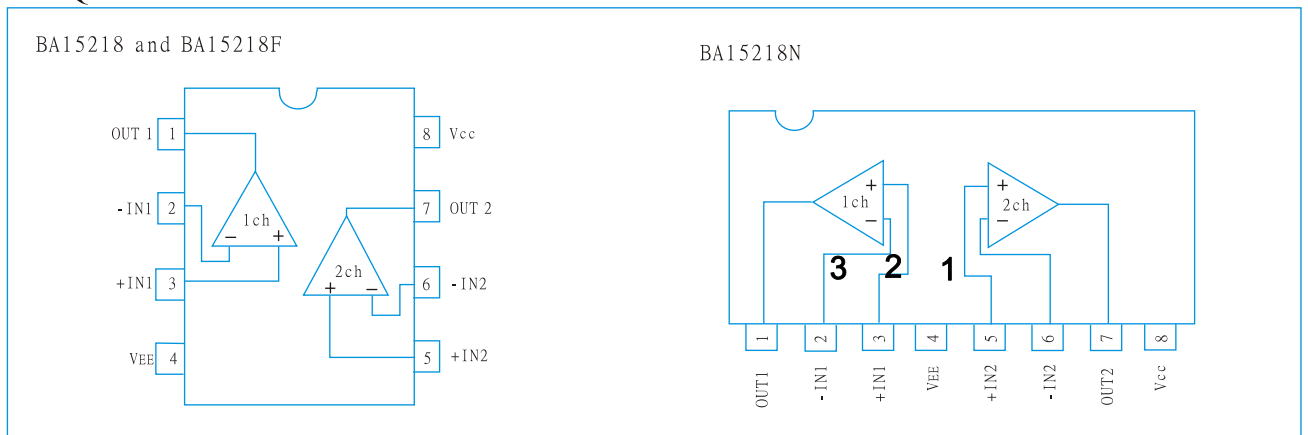
**417-M5-582
NJM2068M**



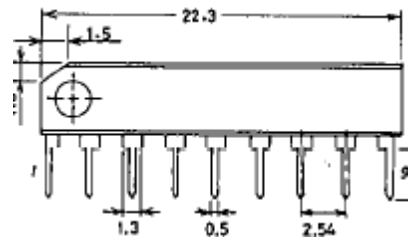
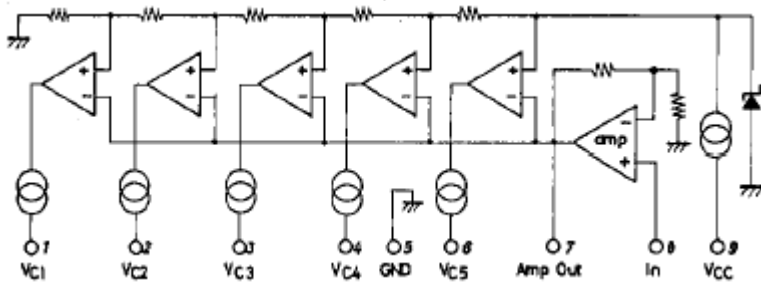
ピン配置

- 1. A OUTPUT
- 2. A-INPUT
- 3. A+INPUT
- 4. V-
- 5. B+INPUT
- 6. B-INPUT
- 7. B OUTPUT
- 8. V+

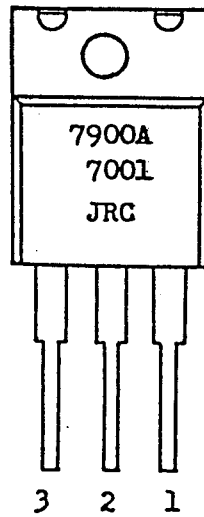
417-QMX2-167



417-RMX40DSP-694(LB1423N)



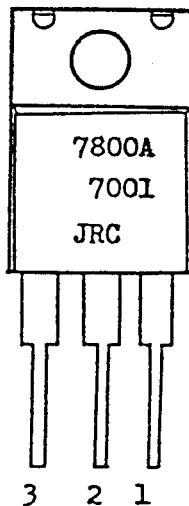
417-HMD3360KA-5085



- 1. OUTPUT
- 2. INPUT
- 3. COMMON

CONNECTION DIAGRAM

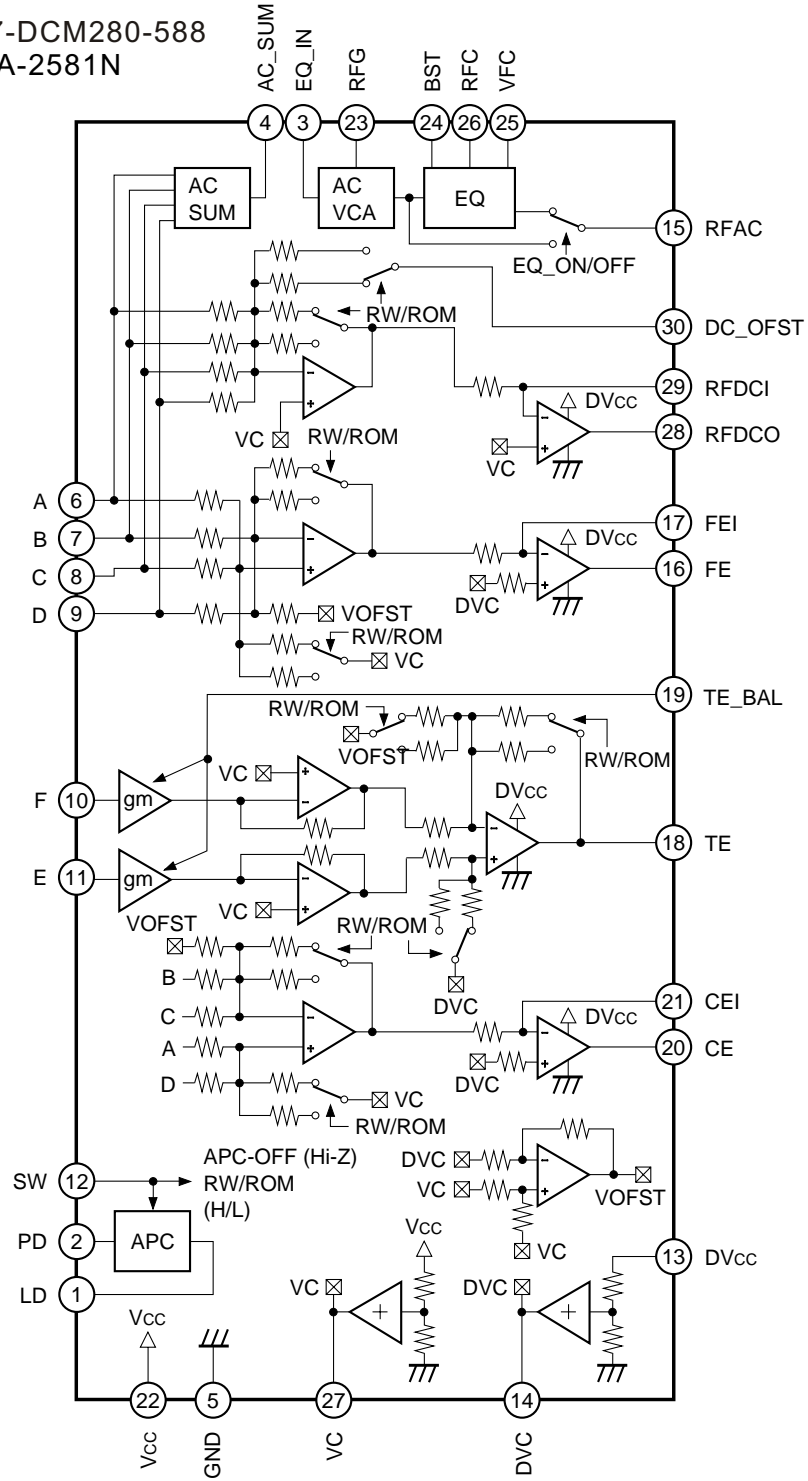
CONNECTION DIAGRAM

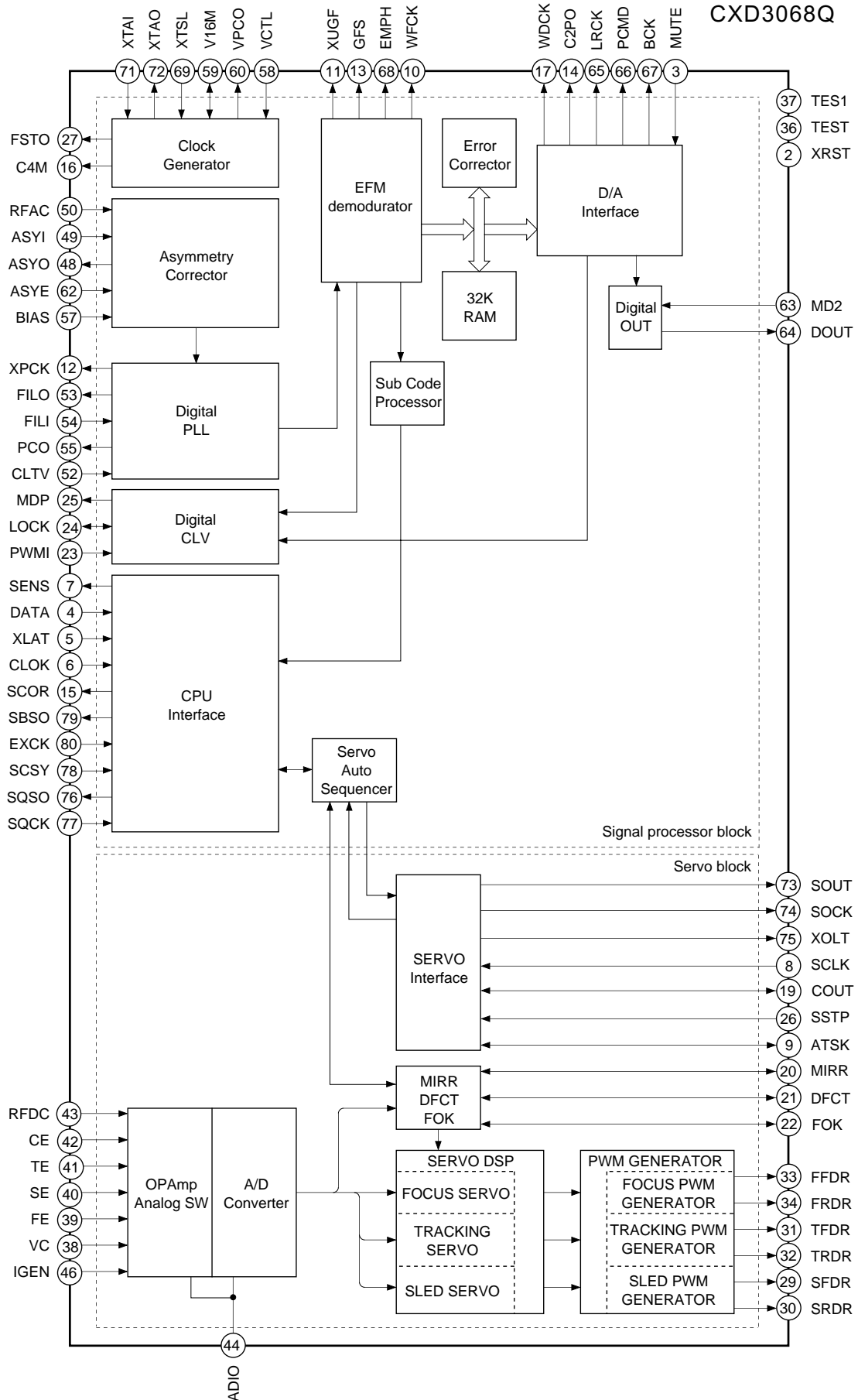


417-BJ1900L-231

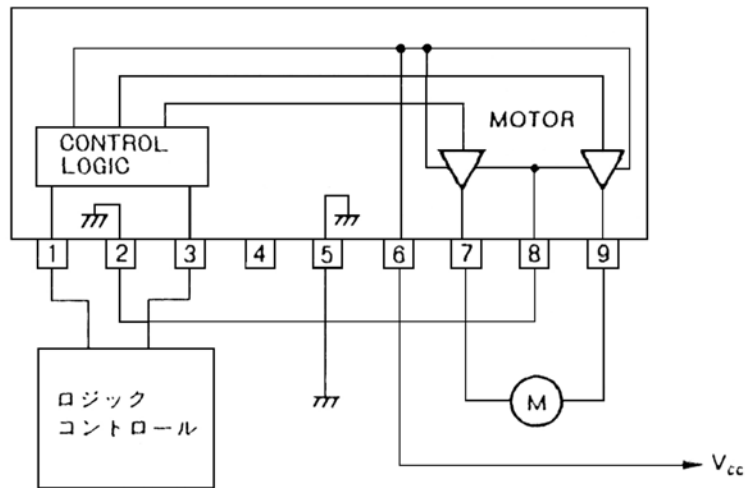
- 1. OUTPUT
- 2. COMMON
- 3. INPUT

417-DCM280-588
CXA-2581N

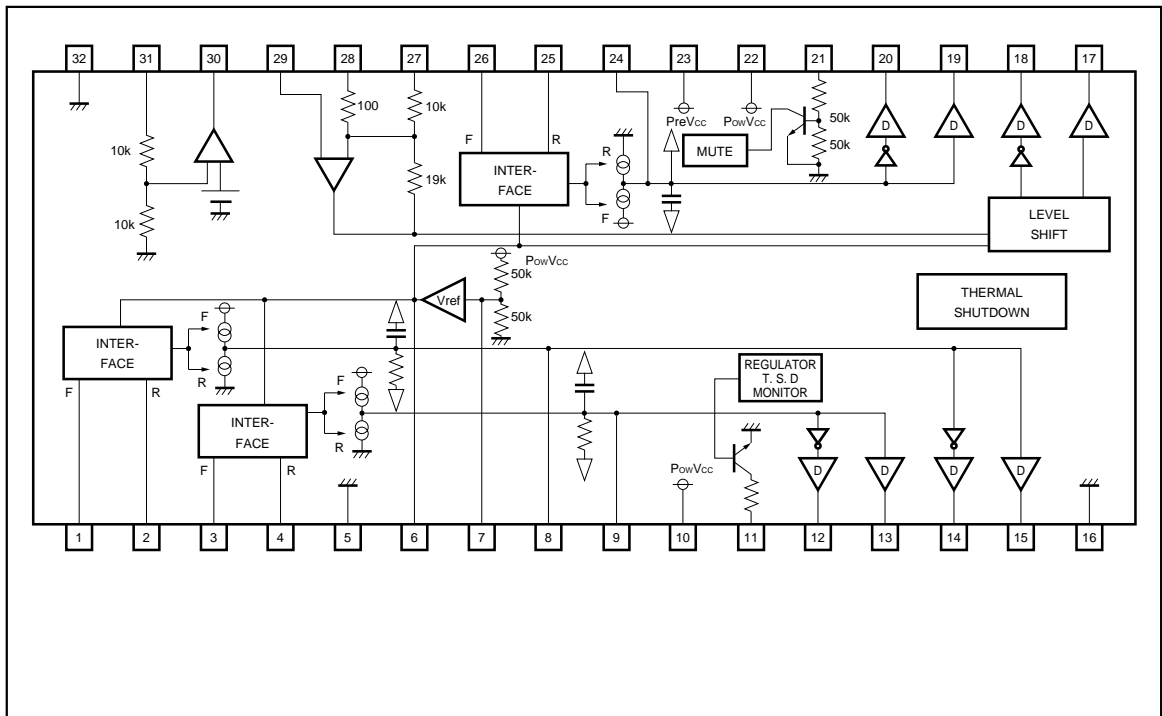




417-KC720-049
BA6218



417-DCM280-596
BA5979S



<i>SYMPTOM</i>	<i>POSSIBLE CAUSE</i>	<i>CORRECTIVE ACTION</i>
The power fails to switch on when the POWER switch is set to on	Poor power plug connection at the AC outlet	Insert the power plug firmly into the AC outlet
Disc play does not start	The disc is loaded upside down The disc is too dirty	Reload the disc with the label with the label side up Clean the disc
No sound	Improper output cable connections Improper amplifier operation	Connect the output cables correctly Check amplifier setup
Sound skips	The CD player is subject to vibrations or physical shock The disc is too dirty	change the installation location Clean the disc
Programmed disc play will not function	The CD player is in normal disk play mode	Hold down the Program button for 3 seconds then program the tracks
Hum	Loose cable connections	Firmly connect all audio plugs