

1 PLQTA ARIES A3521

2 R 47 ohms

2 R 56 ohms

1 R 100 ohms

2 R 100/2W

3 R 1 Kohms

4 R 22 Kohms

1 R 47 Kohms

2 R .33/5W

1 CAP 100pF

1 CAP 270pF

1 CAP 1nF

2 CAP 47nF

1 CAP 4,7mF/35V

1 CAP 22mF/50V

10 DIODOS 1N4002

1 DIODO ZENER 3V3 .5W

1 TRANSIST BC327

1 TRANSIST BC337

2 TRANSIST BC547

2 TRANSIST TIP31C

2 TRANSIST TIP32C

2 TRANSIST 2N3055H

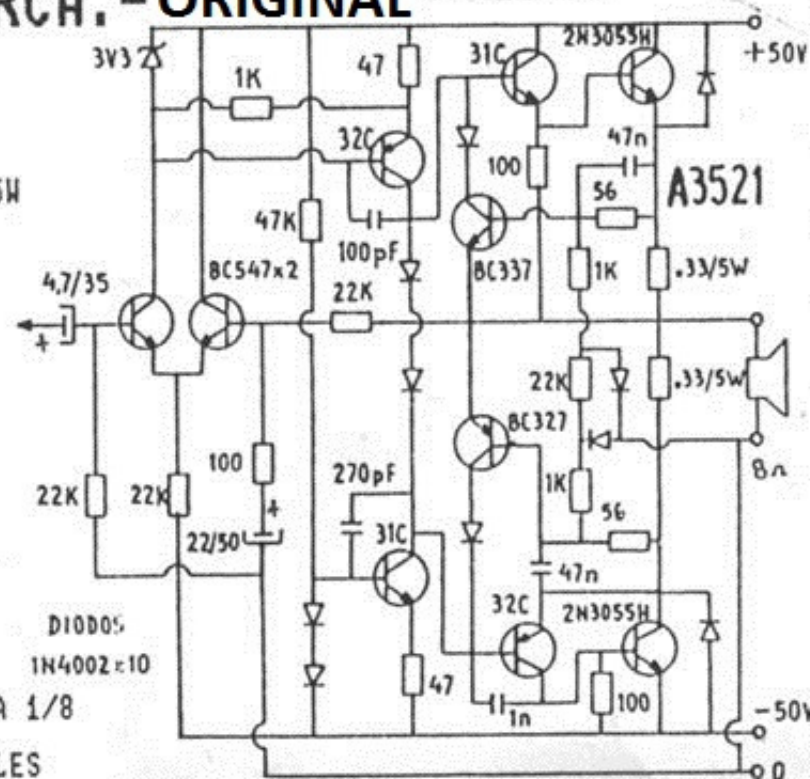
1 DISIPADOR

12 PINES

8 TORNILLOS C/TUERCA 1/8

2 JUEGOS MICA y NIPLES

P/CAPSULA T0-3



ORIGINAL

* ESPECIFICACIONES TECNICAS:

* POTENCIA DE SALIDA: 130 WATTS SOBRE 8 OHMS.

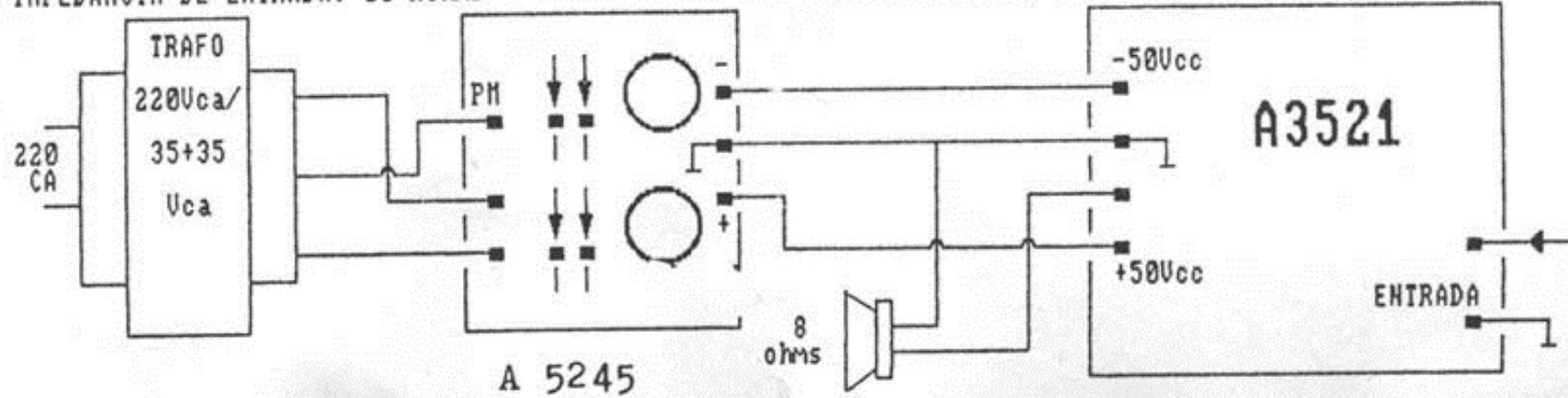
* ANCHO DE BANDA: 10 Hz A 20 KHz

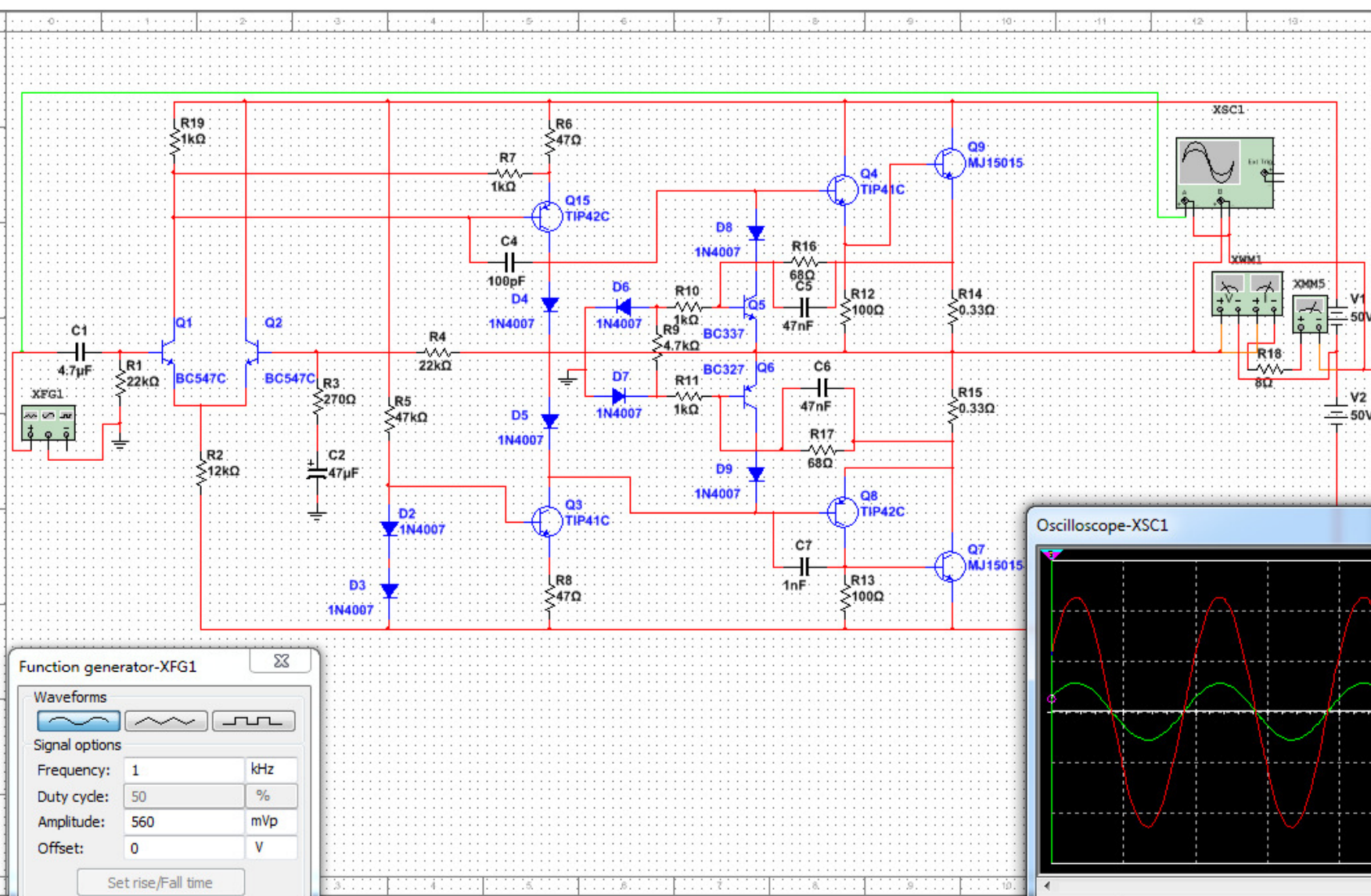
* SENSIBILIDAD DE ENTRADA: 0,30 V EFICACES PARA 130W

* IMPEDANCIA DE ENTRADA: 20 Kohms

* ALIMENTACION: +50Vcc, -50Vcc. "0" A MASA, FUENTE PARTIDA; RECOMENDAMOS LA PLAQUETA ARIES A3455 CON 2 CAPACITORES ELECTROLITICOS 5000 mF/70V y 4 DIODOS 6A20.-

* CORRIENTE DE CARGA A 1 KHz: 2,8 AMPERES Eficaces





Wattmeter-XWM1

131.097 W

Power factor: 1.00000

Voltage: + -

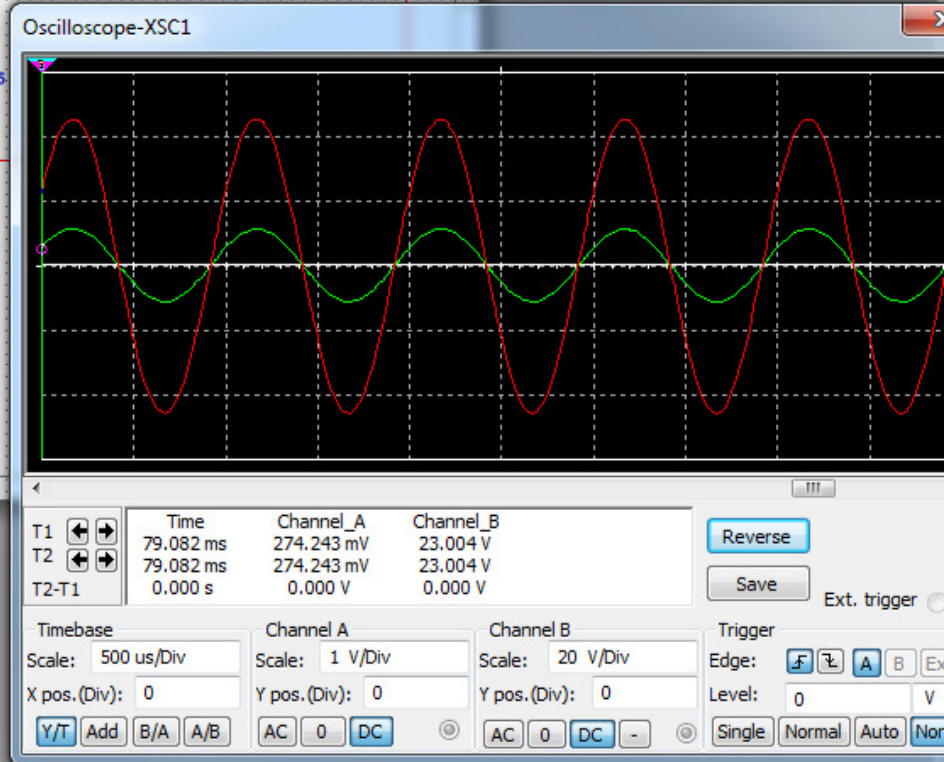
Current: + -

Multimeter-XMM5

4.047 A

A V Ω dB

Set...



Function generator-XFG1

Waveforms: [Sine] [Square] [Triangle]

Signal options:

Frequency: 1 kHz

Duty cycle: 50 %

Amplitude: 560 mVp

Offset: 0 V

Set rise/Fall time

Common: + -

