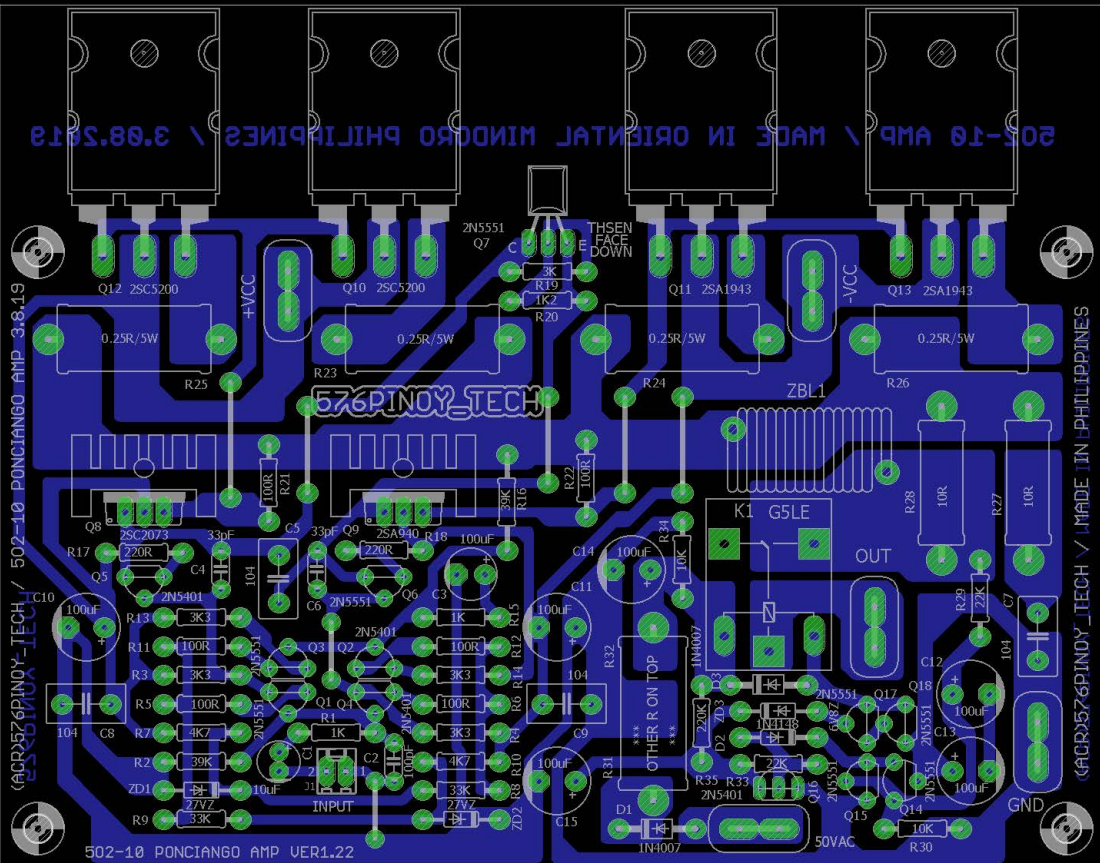


502-10 AMP / MADE IN ORIENTAL MINDORO PHILIPPINES \ 3.08.2019

114mm

(ACR)576PINOY_TECH / 502-10 PONCIANGO AMP - 3.8.19

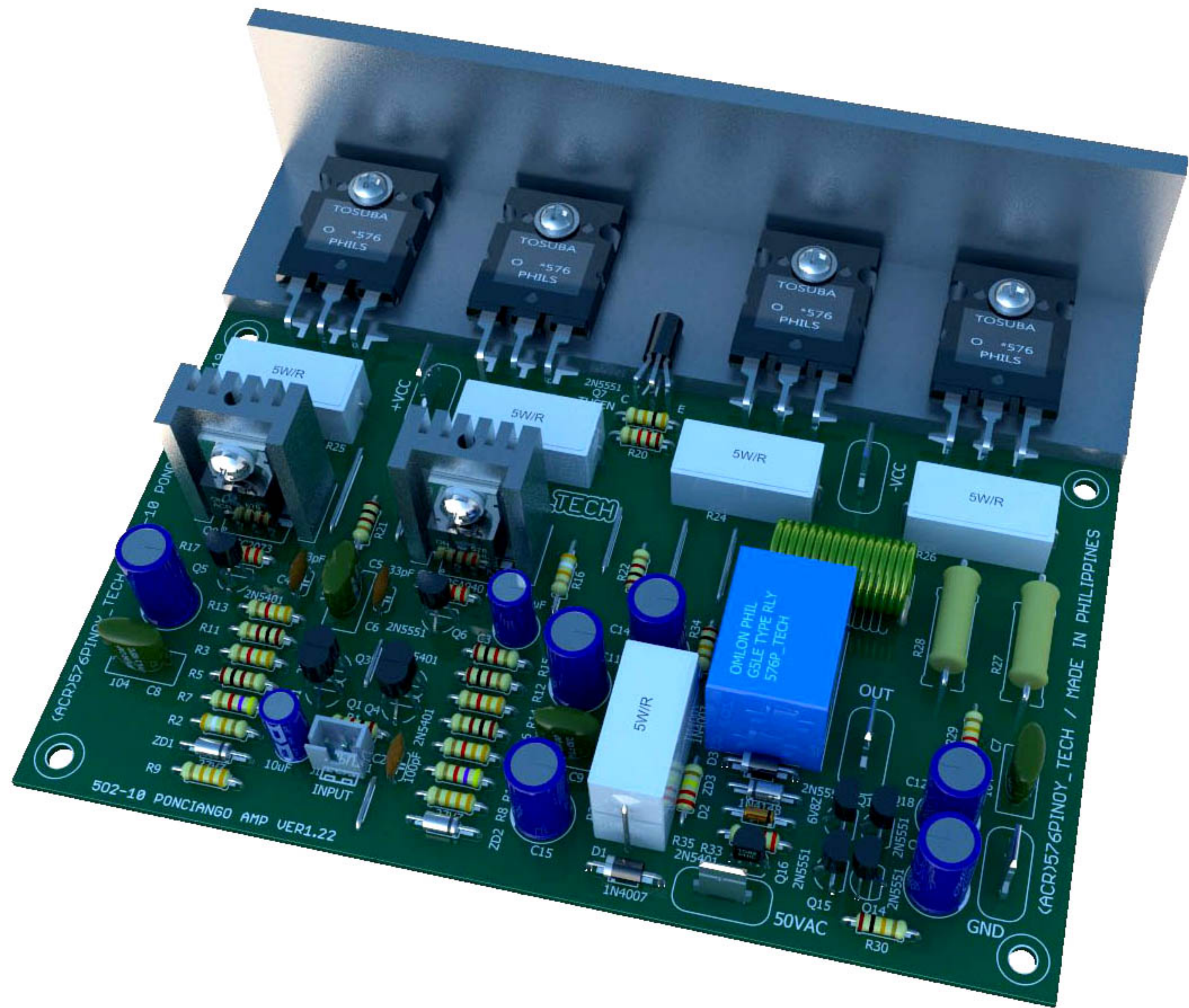


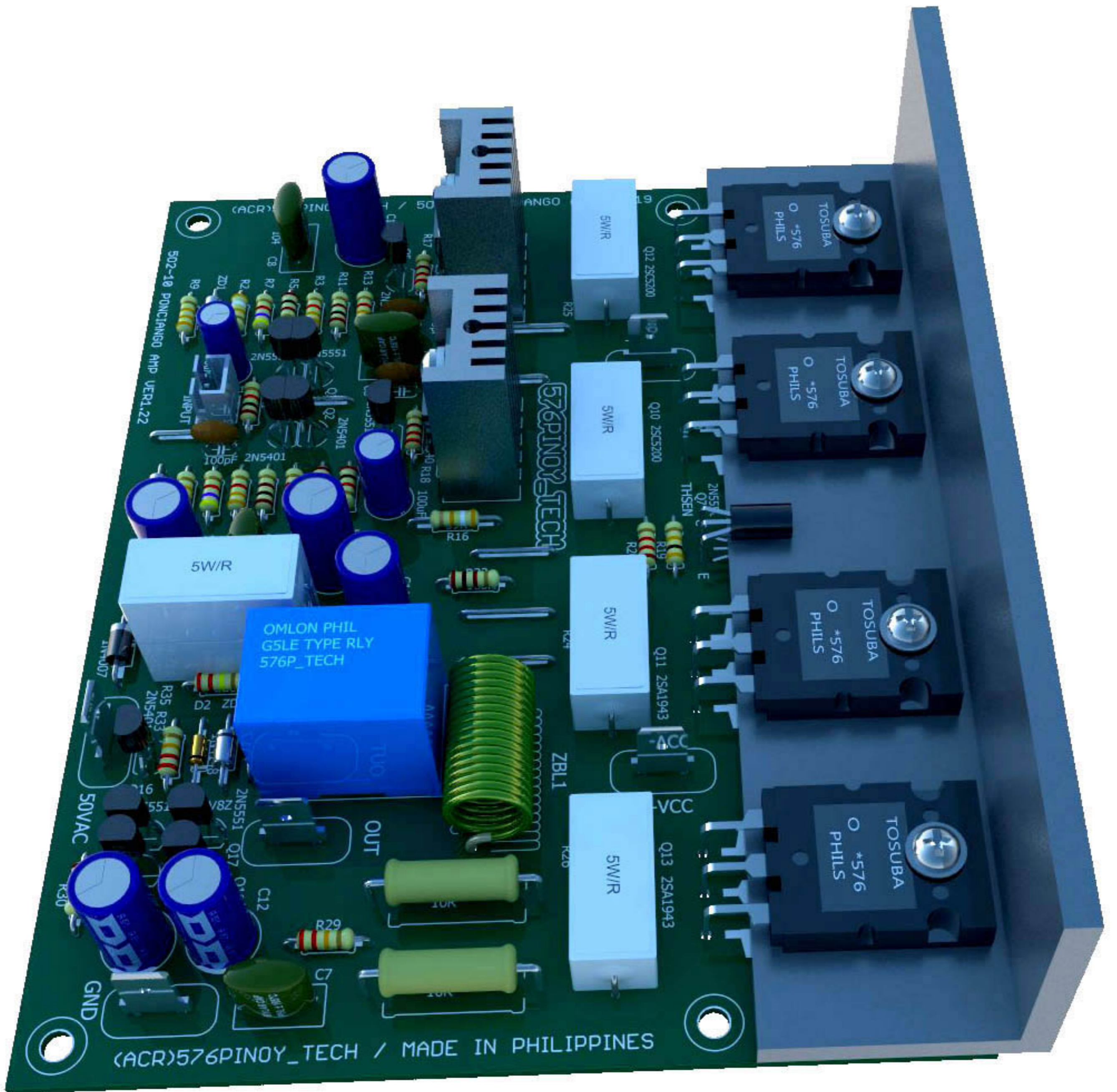
(ACR)576PINOY_TECH / MADE IN PHILIPPINES

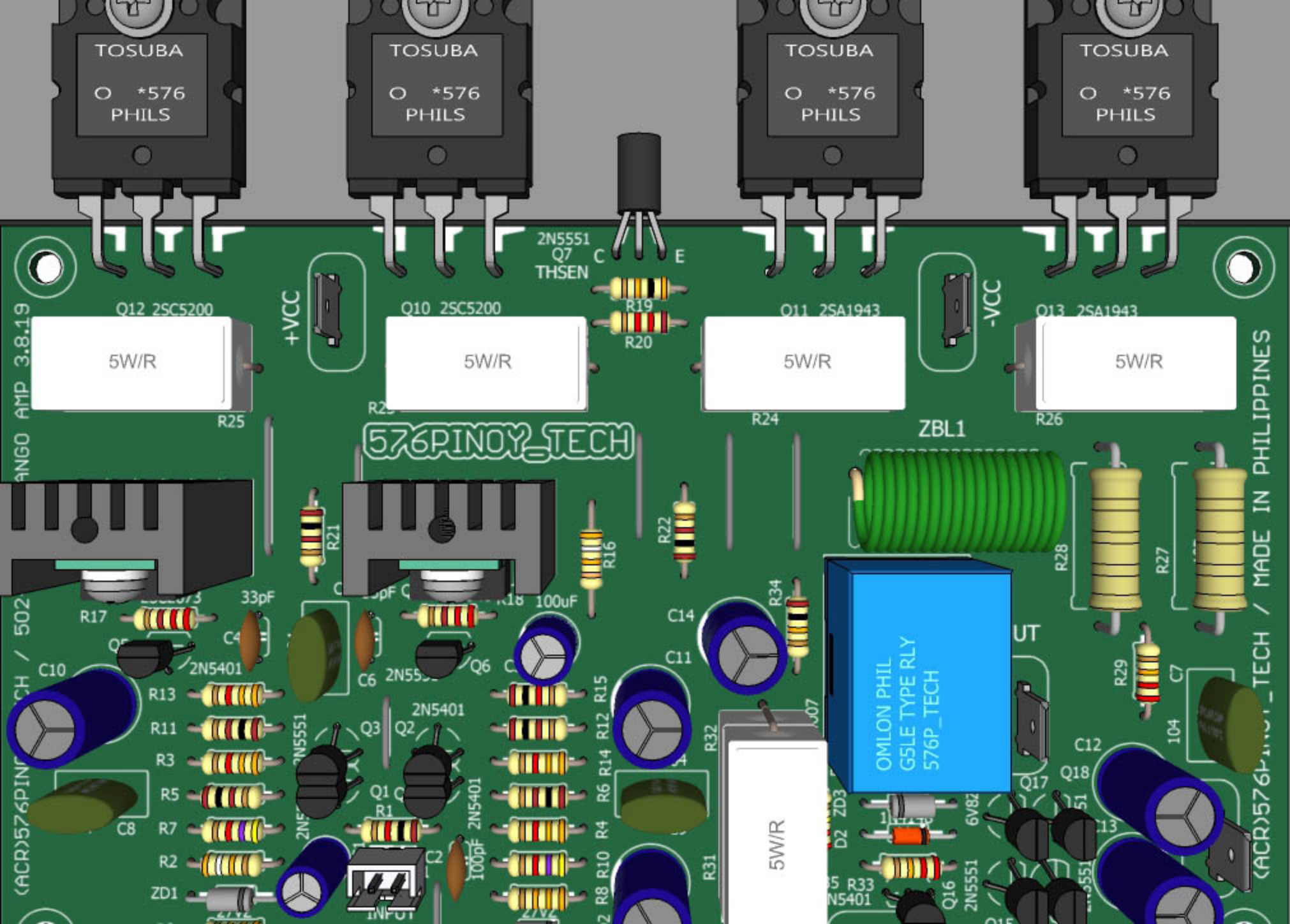
502-10 PONCIANGO AMP VER1.22

146mm

(ACR)576PINOY_TECH / 502-10 PONCIANGO AMP / MARCH 8, 2019







TOSUBA
*576
PHILS

TOSUBA
*576
PHILS

TOSUBA
*576
PHILS

TOSUBA
*576
PHILS

2N5551
Q7
THSEN

Q12 2SC5200

Q10 2SC5200

Q11 2SA1943

Q13 2SA1943

5W/R

5W/R

5W/R

5W/R

+VCC

-VCC

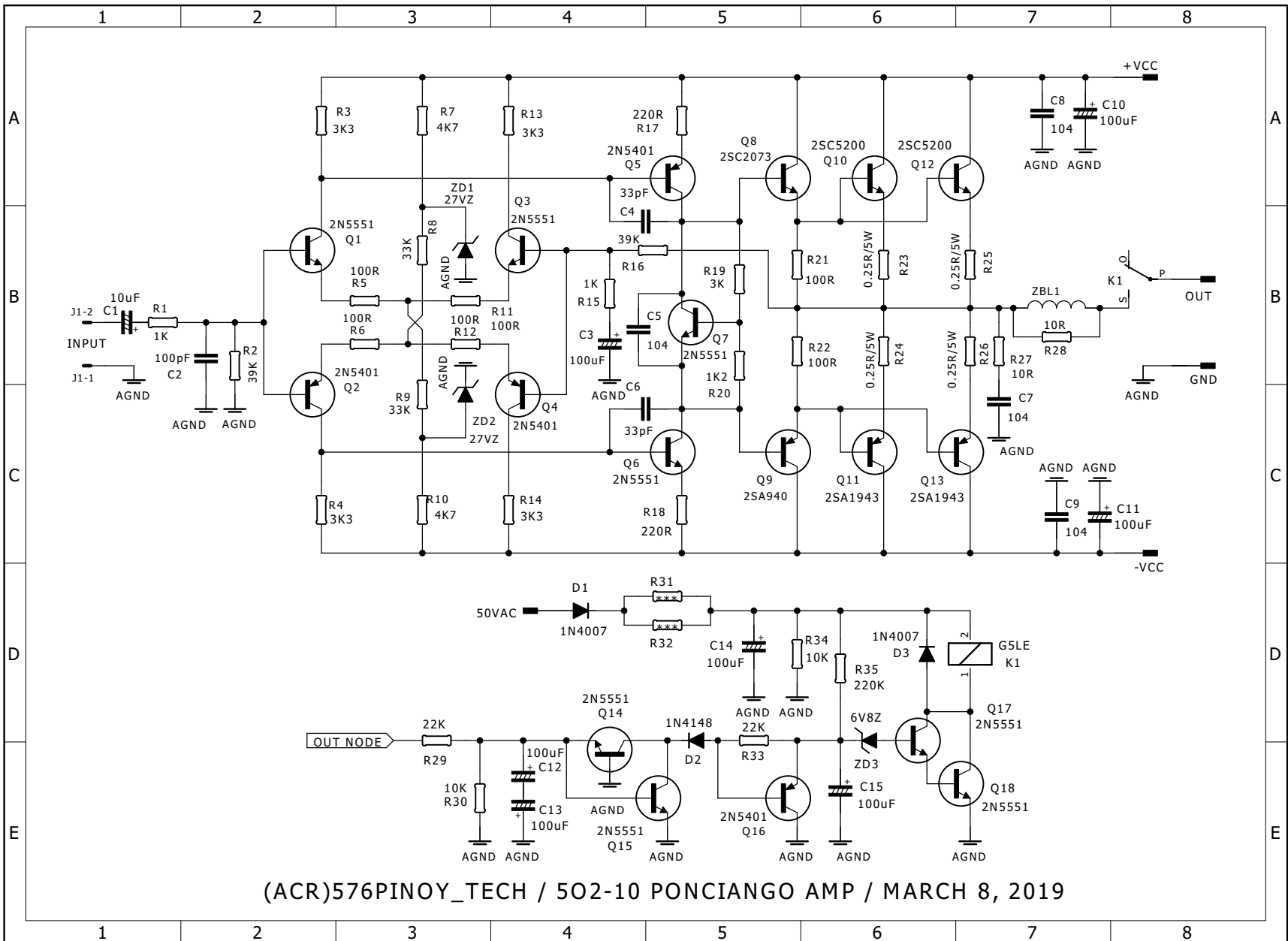
576PINOY_TECH

ZBL1

OMLON PHIL
G5LE TYPE RLY
576P_TECH

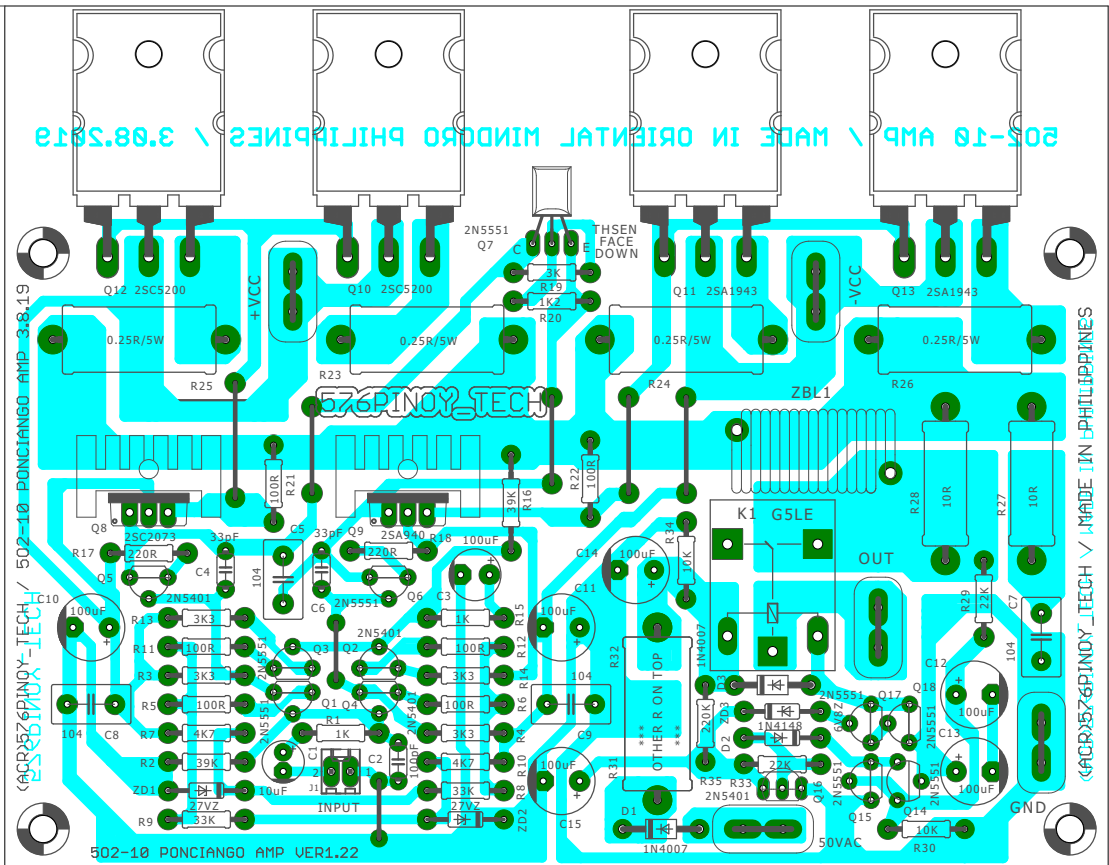
5W/R

MADE IN PHILIPPINES / 576PINOY_TECH



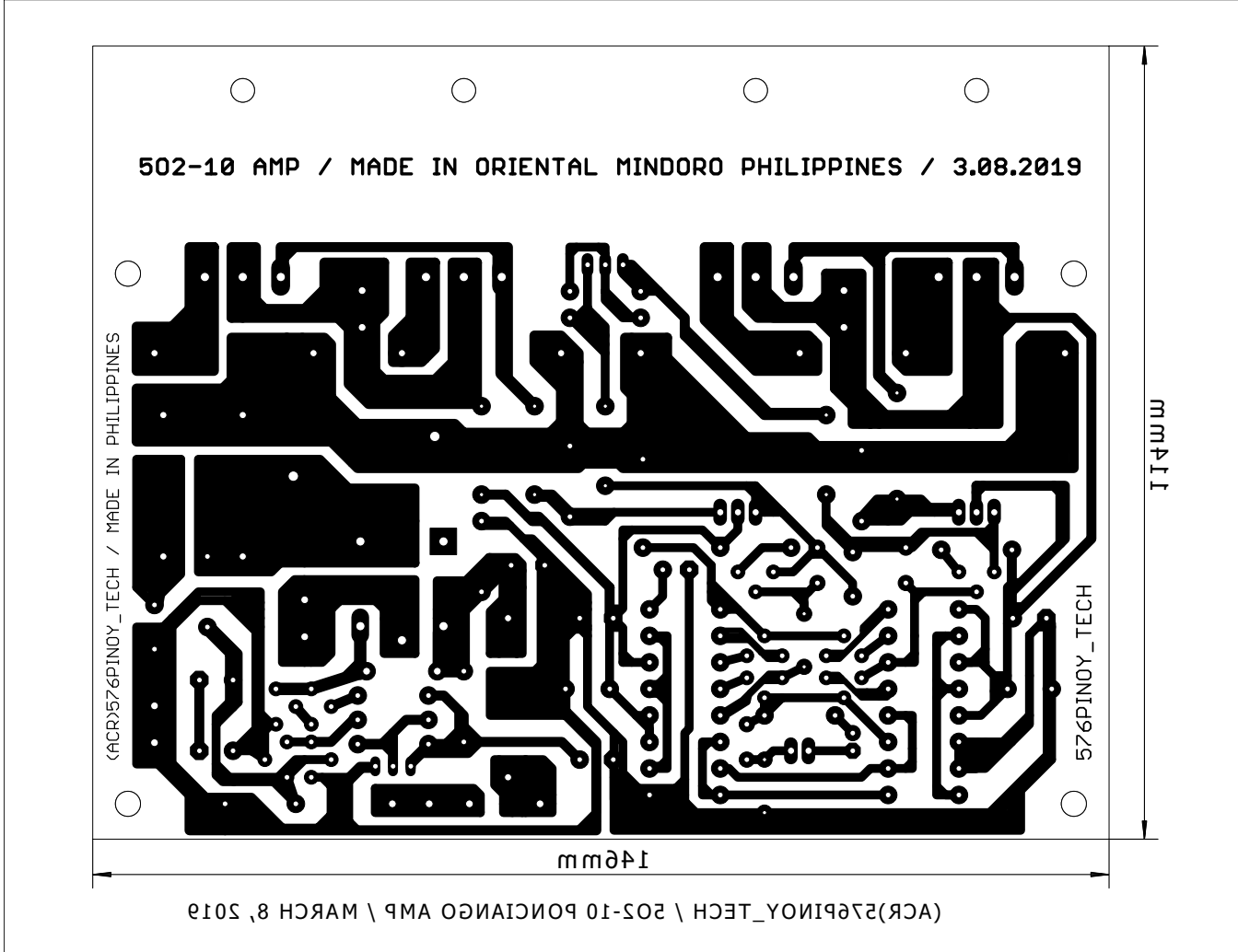
502-10 AMP \ MADE IN PHILIPPINES \ 3.08.2019

114mm

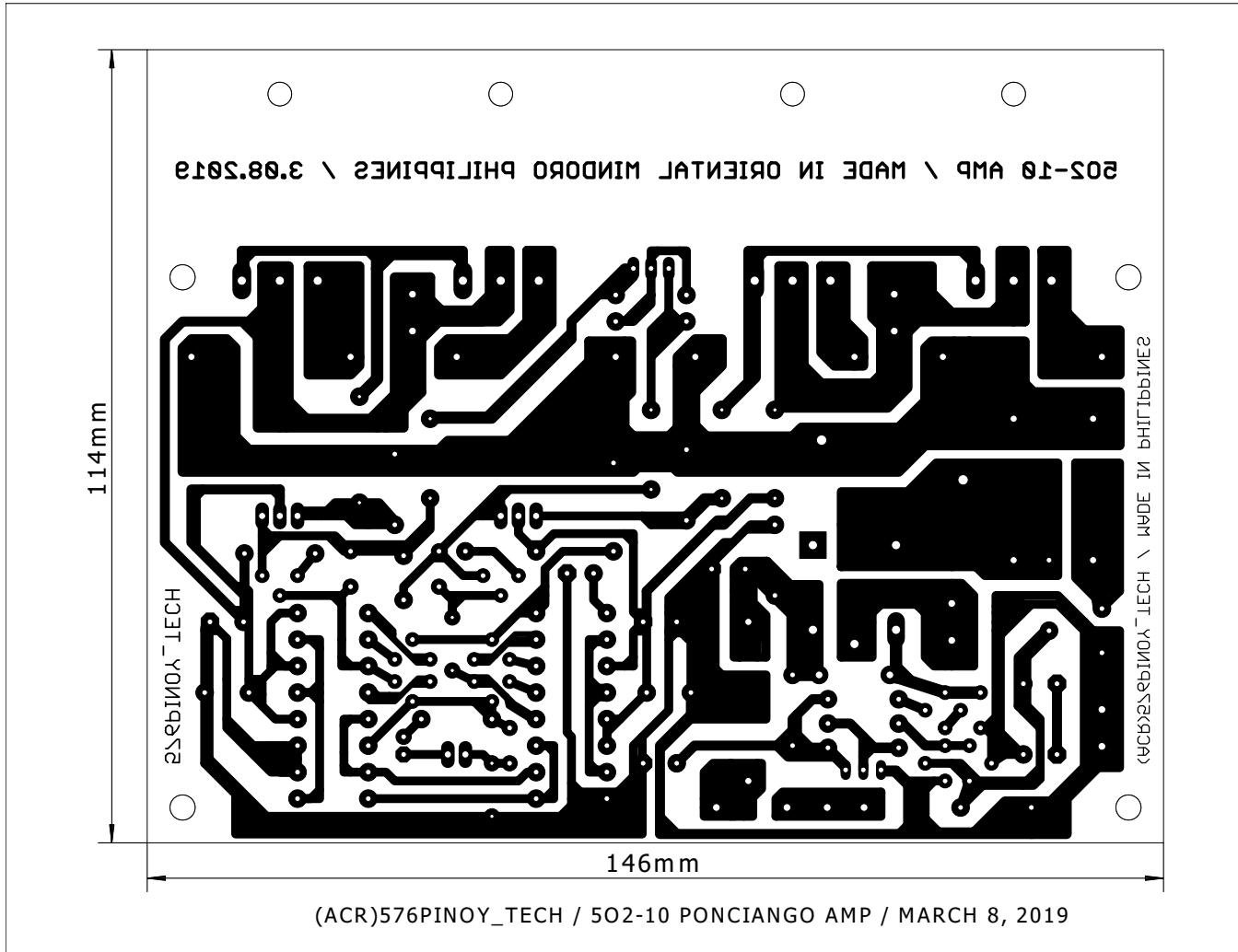


146mm

(ACR)576PINOY_TECH / 502-10 PONCIANGO AMP / MARCH 8, 2019

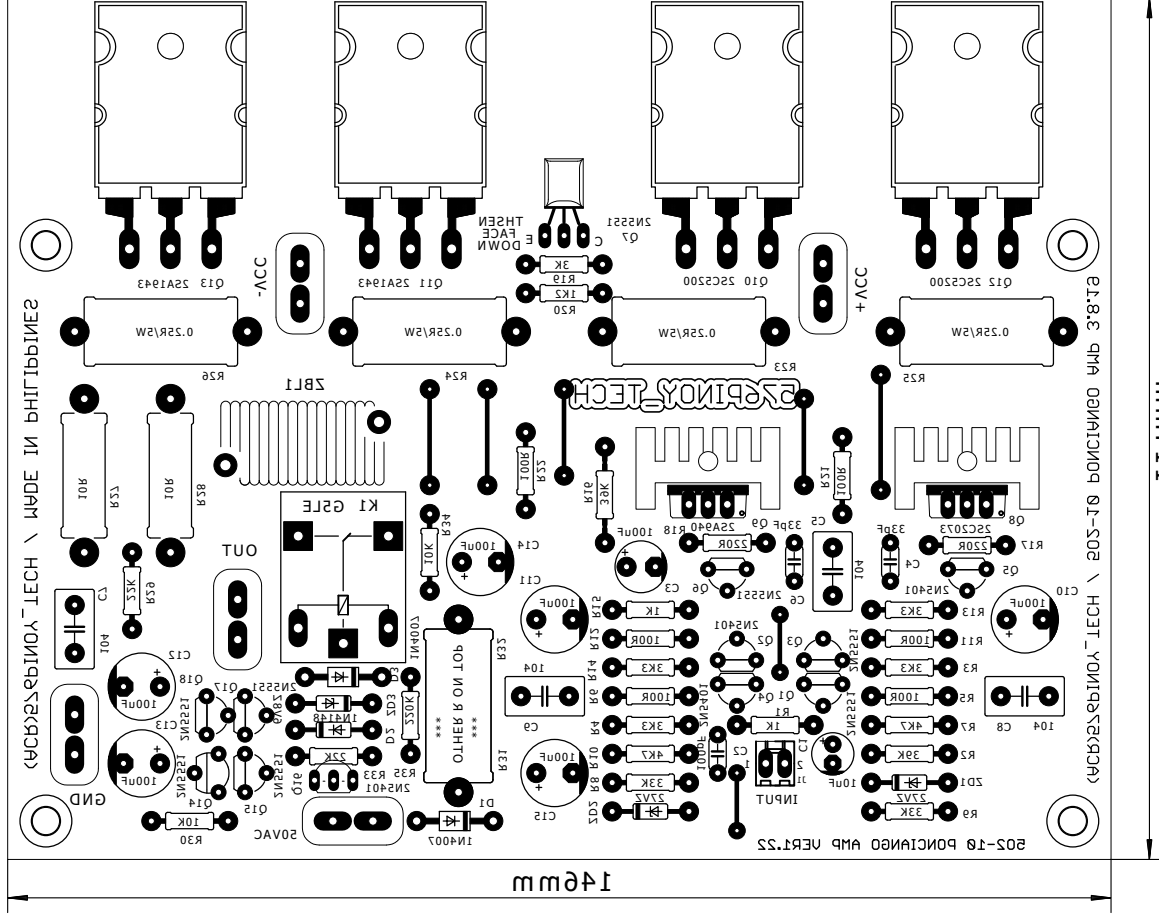


CUTTING METHOD



TONER METHOD

TOP SILK



(ACR)576PINOY_TECH / 5o2-10 PONCIANGO AMP +/-70Vdc / MARCH 8, 2019

Qty	Value	Description	Parts	Remarks
2	33pF	Ceramic Cap	C4, C6	
1	100pF	Ceramic Cap	C2	
4	104	Mylar Cap	C5, C7, C8, C9	
6	100uF/100V	Electrolytic Cap	C3, C10, C11, C12, C13, C14, C15	
1	10uF/16V	Electrolytic Cap	C1	
2	1N4007	Rectifier Diode	D1, D3	
1	1N4148	Switching D	D2	
2	27VZ	1/2W Zener D	ZD1, ZD2	
1	6V8Z	1/2W Zener D	ZD3	
8	2N5551	NPN Transistor	Q1, Q3, Q6, Q7, Q14, Q15, Q17, Q18	
4	2N5401	PNP Transistor	Q2, Q4, Q5, Q16	
1	2SC2073	NPN Transistor	Q8	
2	2SC5200	NPN Transistor	Q10, Q12	
2	2SA1943	PNP Transistor	Q11, Q13	
1	2SA940	PNP Transistor	Q9	
6	100R	Resistor 1/4W	R5, R6, R11, R12, R21, R22	
2	220R	Resistor 1/4W	R17, R18	
2	1K	Resistor 1/4W	R1, R15	
1	1K2	Resistor 1/4W	R20	
1	3K	Resistor 1/4W	R19	
4	3K3	Resistor 1/4W	R3, R4, R13, R14	
2	4K7	Resistor 1/4W	R7, R10	
2	10K	Resistor 1/4W	R30, R34	
2	22K	Resistor 1/4W	R29, R33	
2	33K	Resistor 1/4W	R8, R9	
2	39K	Resistor 1/4W	R2, R16	
1	220K	Resistor 1/4W	R35	
2	10R	Resistor 3W	R27, R28	
2	***	Resistor 5W	R31, R32	to compute depending on rly coil R
4	0.25R/5W	Resistor 5W	R23, R24, R25, R26	
1	G5LE	24V RELAY	K1	Square
5	Faston	Faston Terminal	Terminal	
1	22-27-2021-02	Molex terminal	J1	
1		Zobel Inductor	ZBL1	Custom Made